



DO NOT duplicate or make any changes to this manual without express written consent from Gfp

Parts Manual Gfp 355TH/363TH



Starting SN# 1905355TH 069
Starting SN# 1905363TH 043
November 2023

1. Exploded Drawings

View 1 - Laminator and Stand Assembly

View 2 - Rollers and Unwind/Rewind Shafts

View 3 - Right Side Cabinet

View 4 - Left Side Cabinet

View 5 - Wiring Diagram

CORRESPONDENCE:

Graphic Finishing Partners LLC
PO Box 1097
Maryland Heights, MO. 63043
800-986-2005

sales@gfpartnersllc.com

www.gfpartnersllc.com

SHIPPING:

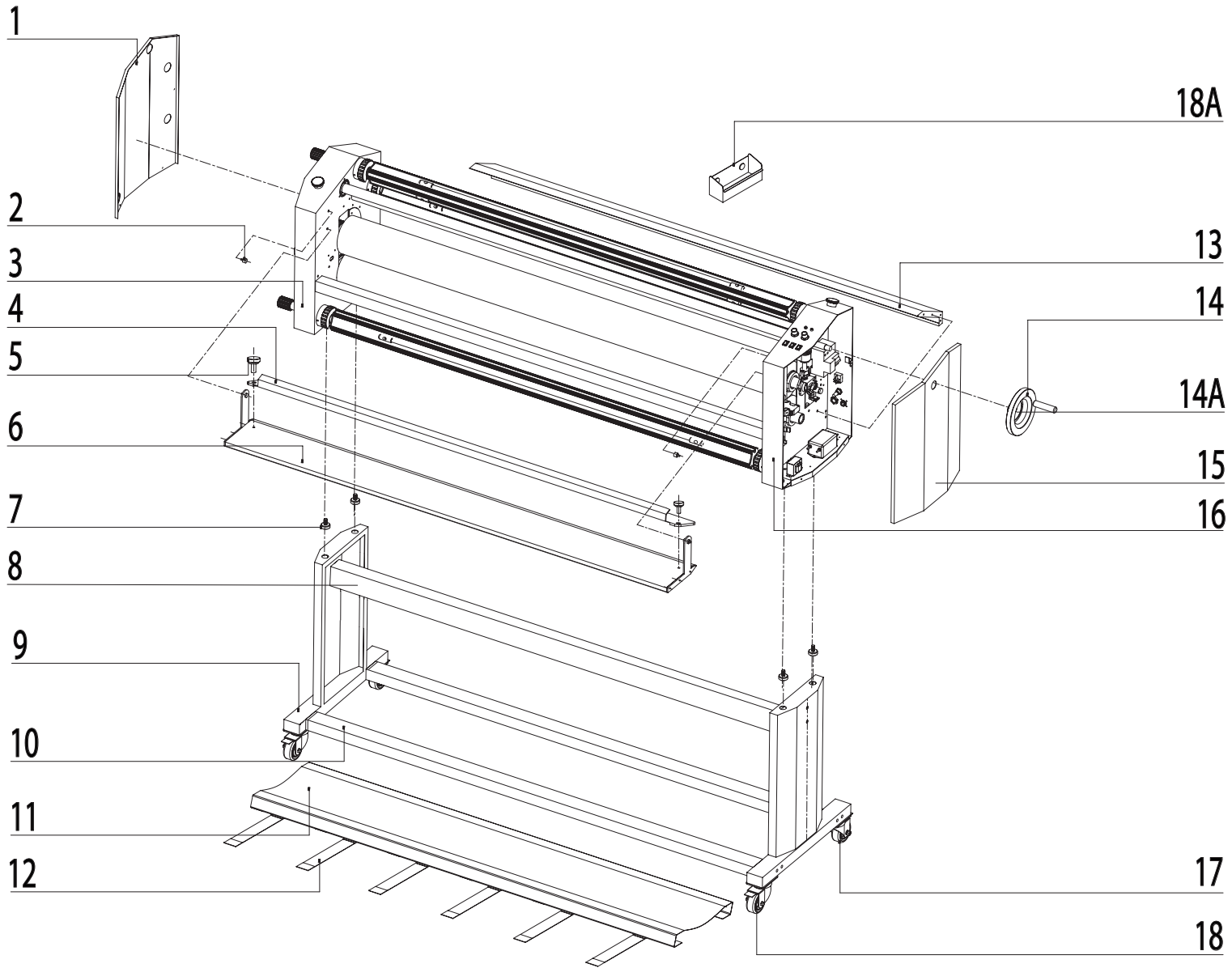
Graphic Finishing Partners LLC
13878 Parks Steed Drive
Earth City, MO. 63045

PARTS:

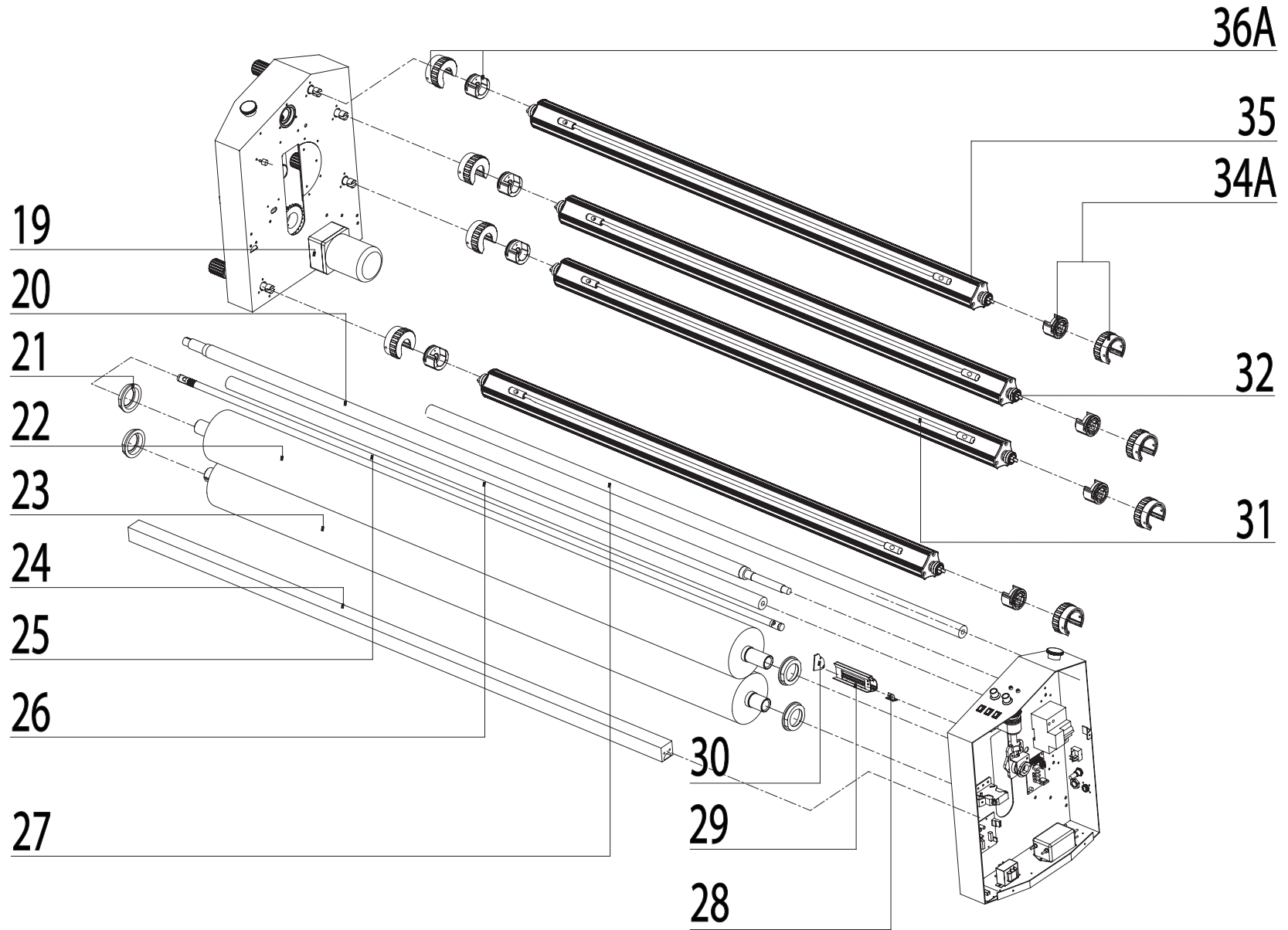
parts@gfpartnersllc.com

SERVICE:

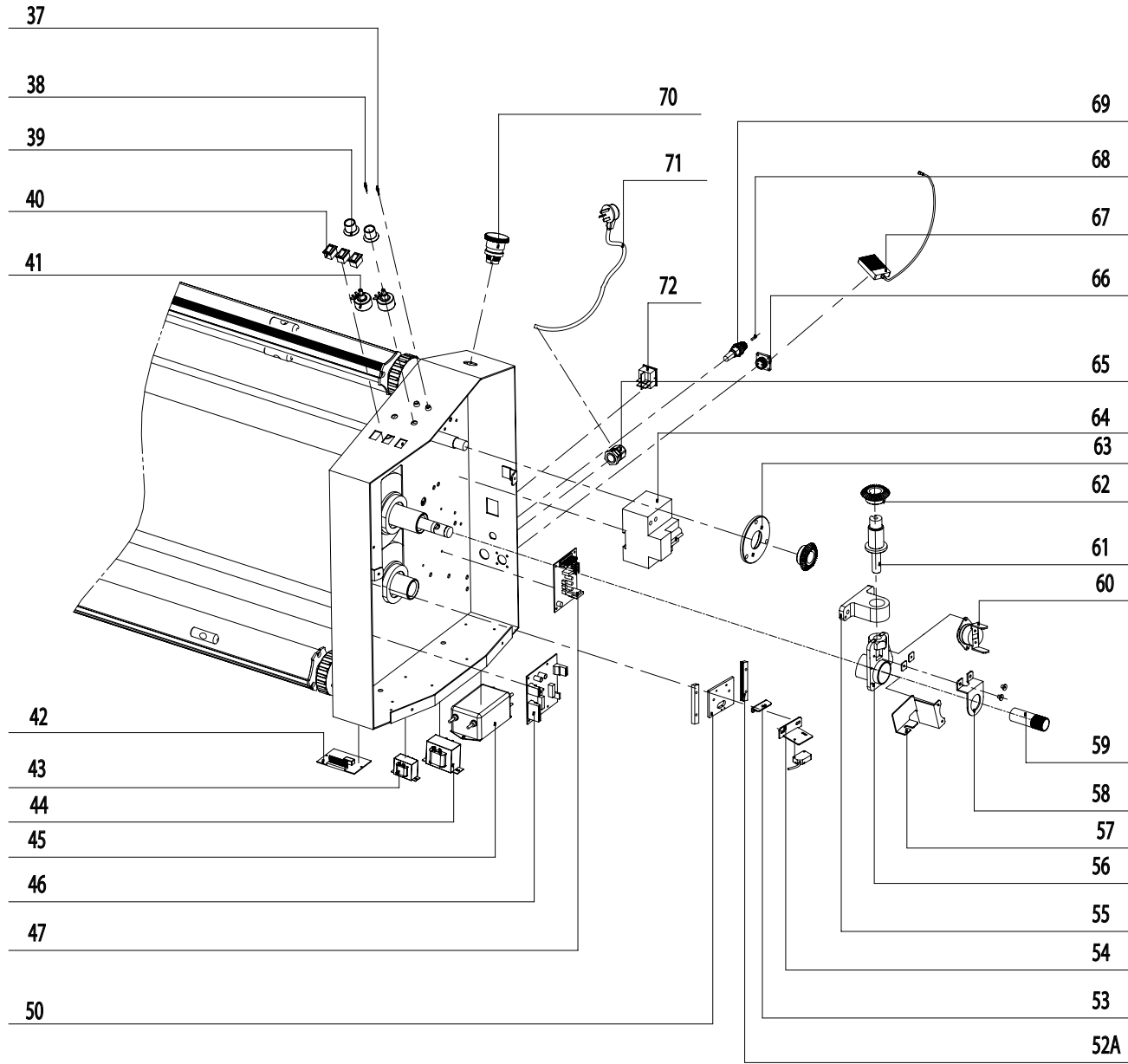
service@gfpartnersllc.com



Drawing number	Part Number	Description	Notes
1	355TH-001	Left end cover	
2	TH-049	Front pannel stop pin	
3	355TH-002	Left tank	
4	55C-155	1400 film-feeding pressing plate	
	63C-155	1600 film-feeding pressing plate	
5	55C-159	Film-feeding plate bolt	
6	355TH-003	Flip-up panel assembly	
	363TH-003	Flip-up panel assembly	
7	TH-047	Foundation adjustment bolt	
8	355TH-005	Middle supporting beam of the frame(355TH)	
	363TH-005	Middle supporting beam of the frame(363TH)	
9	355TH-006	Frame support	
10	355TH-007	Lower supporting beam of frame(1400)	
	363TH-007	Lower supporting beam of frame(1600)	
11	55C-051	Retainer cloth	
	63C-051	Retainer cloth	
12	55C-052	Sticking tape	
13	355TH-008	Rear work panel(355TH)	
	363TH-006	Rear work panel(363TH)	
14	DH-008	Dual-frame handwheelφ160X16	
14A	TH-108	Handwheel key	
15	355TH-009	Right end cover	
16	355TH-010	Right tank	
17	55C-053	Gray rubber caster75	
18	55C-054	Gray tape brake caster 75	
18A	563-176	Tool box	

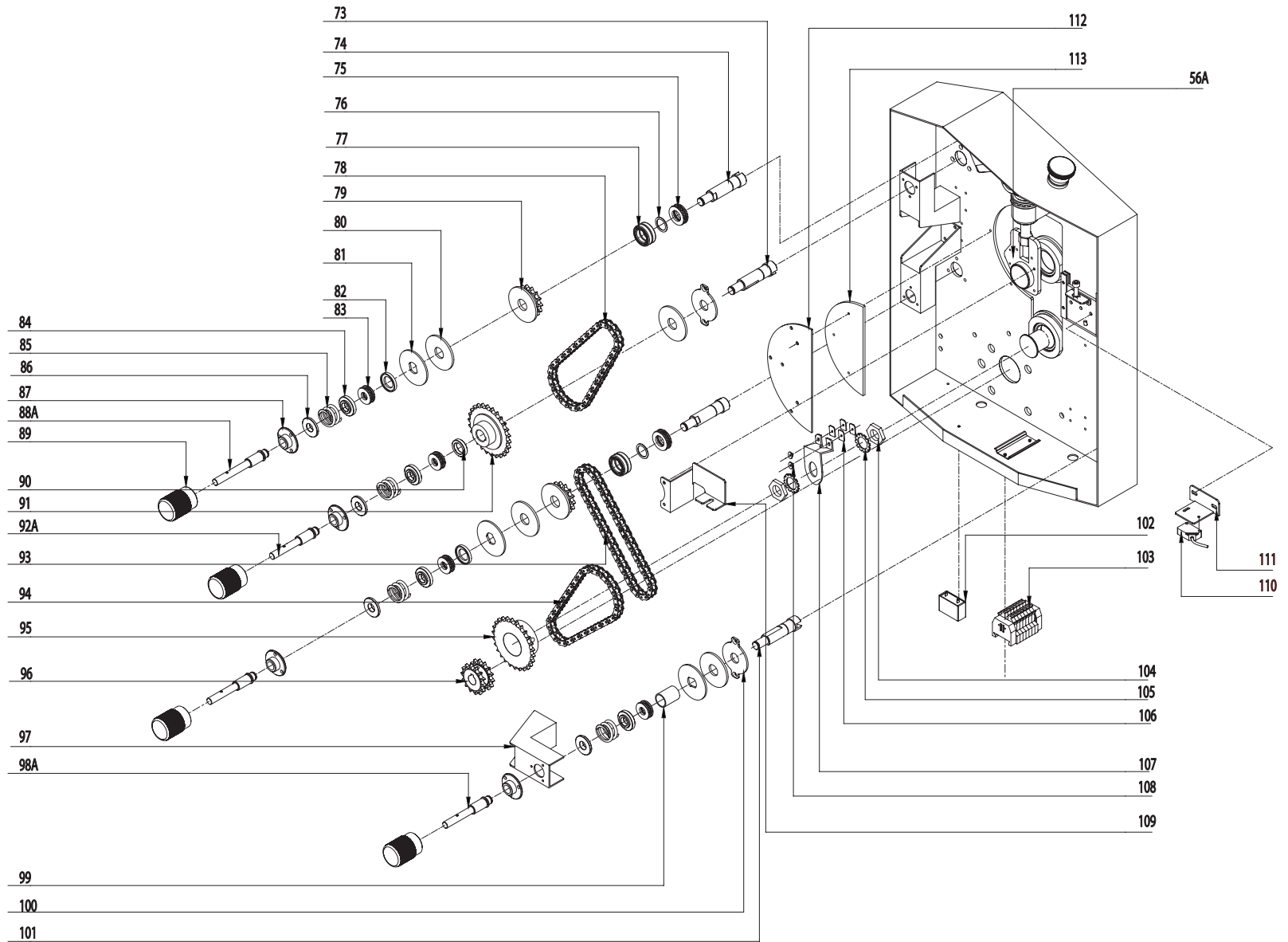


Drawing number	Part Number	Description	Notes
19	355TH-011	120V AC single-phase asynchronous motor	
20	355TH-012	Pressure adjusting shaft(355TH)	
	363TH-012	Pressure adjusting shaft(363TH)	
21	355TH-069	Bearing block subassembly	
22	355TH-013	Upper rubber roller(355TH)	
	363TH-008	Upper rubber roller(363TH)	
23	355TH-014	Lower rubber roller(355TH)	
	363TH-009	Lower rubber roller(363TH)	
24	355TH-015	Front supporting beam(1400)	
	363TH-015	Front supporting beam(1600)	
25	355TH-016	Stainless steel heating pipe(355TH)	
	363TH-016	Stainless steel heating pipe(363TH)	
26	355TH-087	lower Guide roller(355TH)	
	363TH-087	lower Guide roller(363TH)	
27	355TH-093	Upper Guide roller	
	363TH-093	Upper Guide roller	
28	355TH-017	Sensor	
29	TH-054	Sensor support	
30	TH-053	Sensor support plug	
31	355TH-018-01	Rubber lock bar(1400)	
	363TH-013-01	Rubber lock bar(1600)	
32	355TH-089	End cap double bearing with tongue	Starting SN# 1712363TH 185
	55C-152	End cap single bearing with tongue	
	55C-154	End cap single bearing button end	
34A	55C-139-01	Right Cradle Assembly	
35	355TH-18	Quick-Grip Supply Shaft	
	363TH-13	Quick-Grip Supply Shaft	
36A	55C-137-01	Left Cradle Assembly	



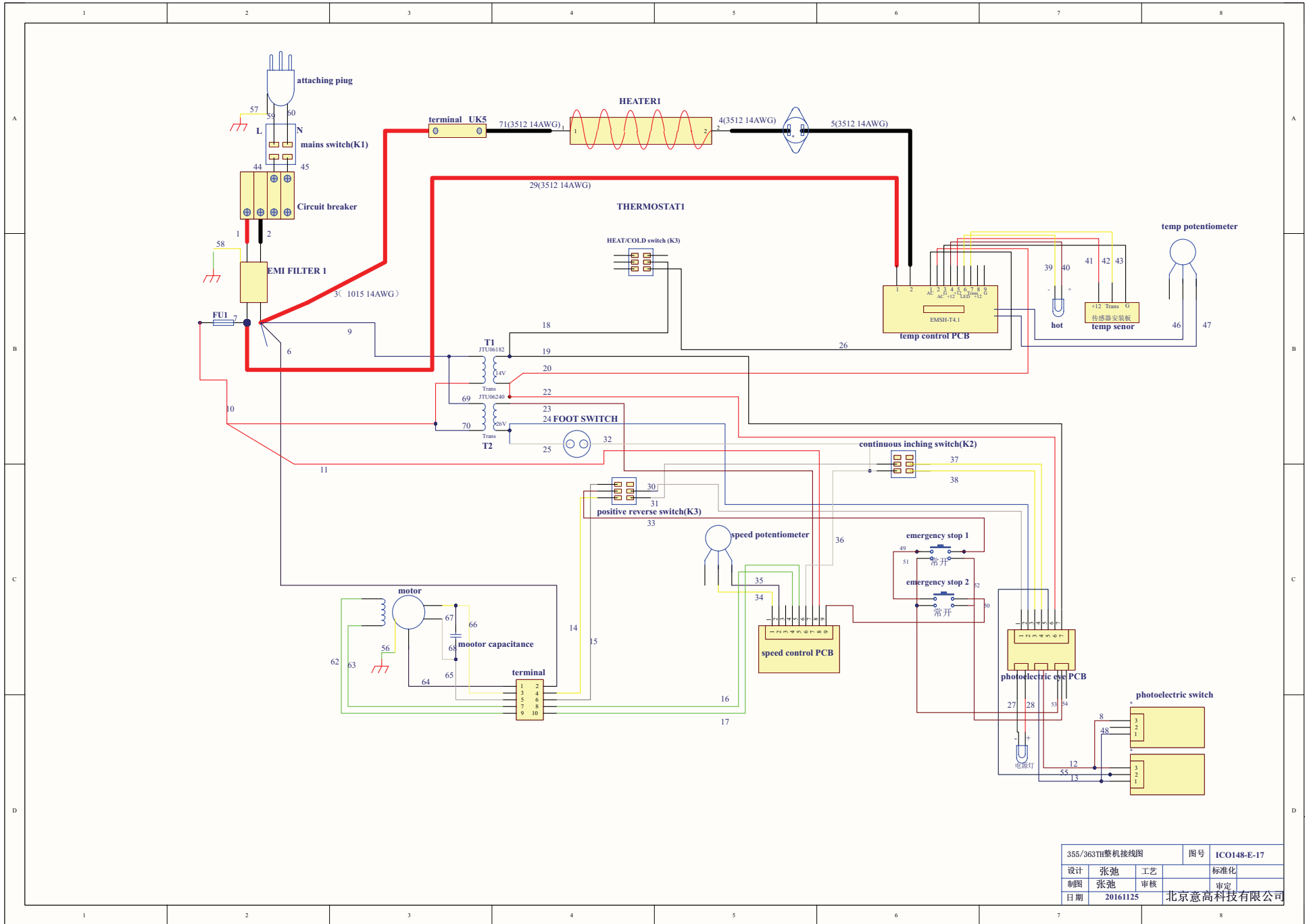
Drawing number	Part Number	Description	Notes
37	55C-030	LED Including:lamp holder	
38	355TH-019	LED Including:lamp holder	
39	TH-105	Knob	
40	TH-106	Rocker switch	
41	TH-099	Potionmeter	
42	563-450	Optoelectronic eye control panel	Starting 6/21 prior part 563-449
43	55C-123	Transformer 24V	
44	55C-124	Transformer 14V	
	563-448	Transformer 15V	Starting SN# 2104355TH 036 Starting SN# 2103363TH 050
45	355TH-020	Filter	
46	355TH-021	Speed adjusting panel	
47	355TH-063	Temperature adjusting panel	
50	TH-122	Lifting photoelectric skateboard	
52A	355TH-095	Guide rail bar	
53	355TH-094	Adjusting screw holder	
54	55C-214	Right support of photoelectric eye	
55	355TH-023	Pressure-adjusting support	
56	355TH-064-01	Pressure-adjusting block of left	
56A	355TH-064-02	Pressure-adjusting block of right	
57	355TH-070	Right lifting board	
58	355TH-025	Stainless steel heating pipe support 2	
59	355TH-026	Stainless steel heating pipe sleeve	
60	TH-091	Thermal protector	
61	355TH-065	Pressure-adjusting locating shaft	
62	355TH-028	30-tooth conical gear	
63	355TH-092	Blue disk (subassembly)	
64	355TH-022	Miniature circuit breaker (MCB)	
65	C-022	Wire tensioner	
66	TH-097	Aviation plug	

Drawing number	Part Number	Description	Notes
67	TH-111	Pedal switch	
68	355TH-090	Insurance pipe	
69	TH-094	Fuse base	
70	DH-048	Emergency stop switch	
71	355TH-029	Power cable	
72	TH-098	Rocker switch	



Drawing number	Part Number	Description	Notes
73	355TH-071	Lower positioning axis of winding and unwinding	
74	355TH-072	Reeling positioning shaft	
75	55C-179	Thrust ball bearing	
76	55C-172	Winding support pad	
77	55C-171	Deep-groove ball bearing	
78	355TH-038	Chain 06B 50 pitches	
79	355TH-034	14-tooth sprocket of winding/unwinding feeding roller	
80	355TH-048	Winding/unwinding friction disc	
81	355TH-047	Winding/unwinding friction disc (1)	
82	355TH-073	Winding/unwinding upper spacing sleeve	
83	55C-174	Thrust ball bearing 51101	
84	355TH-074	Damping spring holder (2)	
85	55C-166	Feeding roller pressure spring(3)	
86	355TH-075	Damping spring holder (1)	
87	355TH-076	Damping adjusting nut	
88A	355TH-077A	Upper pressure shaft of winding and unwinding	
89	55C-177	Non-scale fine-tuning handle	
90	355TH-078	Winding/unwinding lower spacing sleeve	
91	355TH-037	26-tooth sprocket of winding/unwinding feeding roller	
93	355TH-039	Chain 06B, 48 pitches	
94	355TH-042	Chain 06B, 46 pitches	
95	355TH-054	Rubber roller sprocket	
96	355TH-053	14-tooth motor sprocket	
97	355TH-080	Feeding roller damp support	
98A	355TH-081A	Unwinding pressure-adjusting shaft	
99	355TH-082	Unwinding pressure-adjusting sleeve	
100	355TH-091	Rewind&Unwind Friction Disc(3)	
101	355TH-083	Unwinding locating shaft	
102	355TH-051	Motor capacitor	

Drawing number	Part Number	Description	Notes
103	355TH-052	Connection terminal	
104	355TH-084	φM18X1.5 Hexagonal nut	
105	355TH-088	φ18 Toothed Washer	
106	355TH-062	Stainless steel anticreep septum	
107	355TH-057	Stainless steel heating pipe support (1)	
108	355TH-061	Stainless steel anticreep sleeve	
109	355TH-086	Left lifting board	
110	44TH-019	Photoelectric sensor	
111	55C-208	Left support of photoelectric eye	
112	355TH-059	Semi-cycle reinforcing plate	
113	355TH-058	Semi-cycle liner	



355/363TH整机接线图			图号	IC0148-E-17
设计	张弛	工艺		标准化
制图	张弛	审核		审定
日期	20161125	北京意高科技		