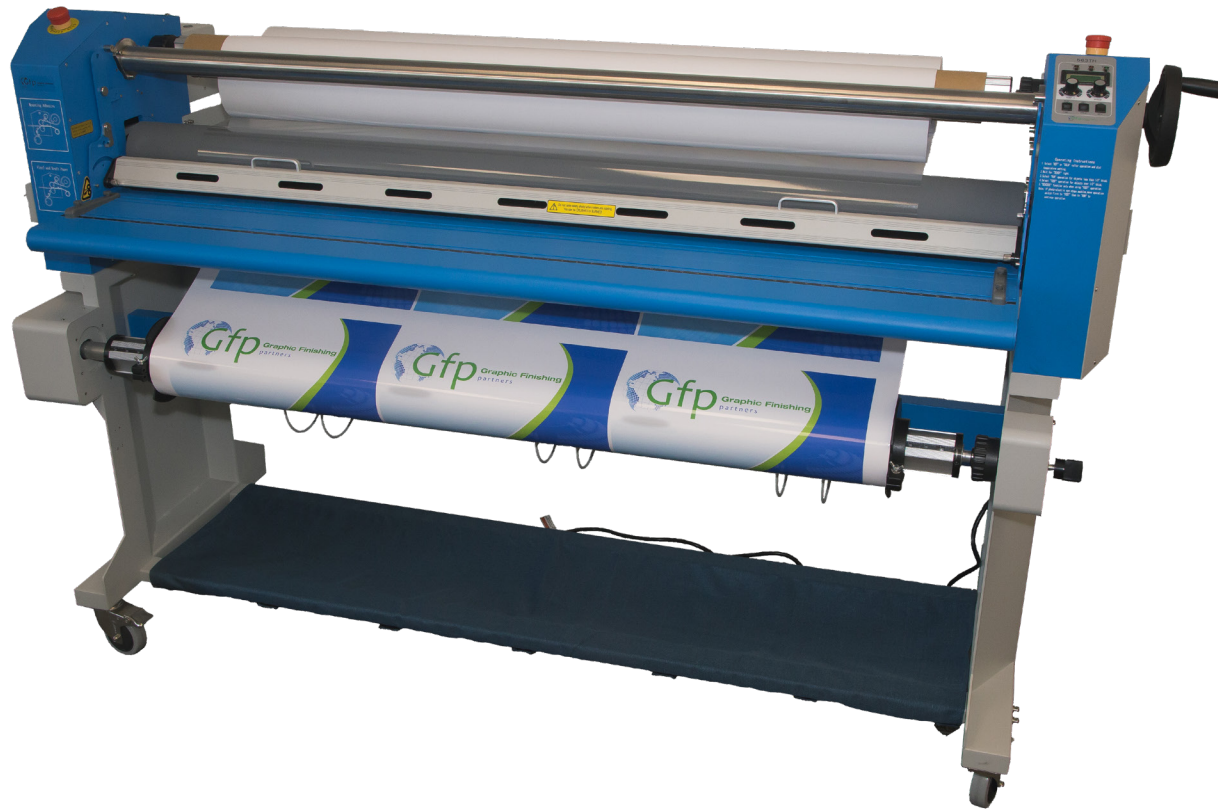




DO NOT duplicate or make any changes to this manual without express written consent from Gfp

Parts List Gfp 563TH-4



1. Exploded Drawings

View 1 - Laminator and Stand Assembly

View 2 - Left Side Assembly and Chains

View 3 - Left Side Cabinet

View 4 - Right Side Assembly

View 5 - Right Side Cabinet

View 6 - Upper Unwind

View 7 - Upper Unwind Brake Assembly

View 8 - Lower Unwind

View 9 - Feed Table

View 10 - Rollers

View 11 - Upper Unwind

View 12 - Rewind Clutch and Motor

View 13 - Stand and Lower Unwind Brake

View 14 - Slitter Assemblies

View 15 - Rewind Idles and Shafts

View 16 - Rewind Control

View 17 - Rewind Drive

View 18 - Wiring Diagram

CORRESPONDENCE:

Graphic Finishing Partners LLC
PO Box 1097
Maryland Heights, MO. 63043
800-986-2005

sales@gfpartnersllc.com

www.gfpartnersllc.com

SHIPPING:

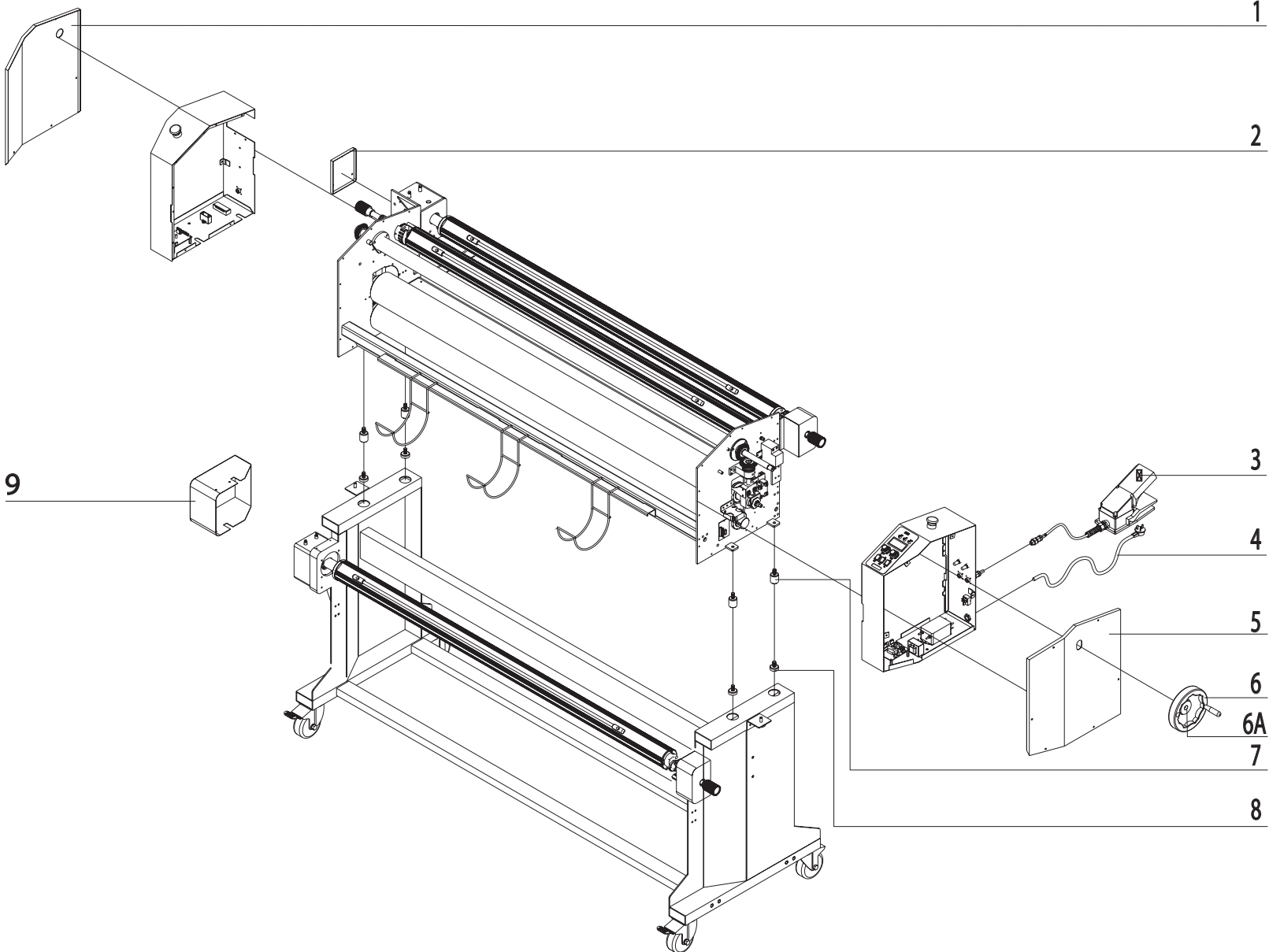
Graphic Finishing Partners LLC
13878 Parks Steed Drive
Earth City, MO. 63045

PARTS:

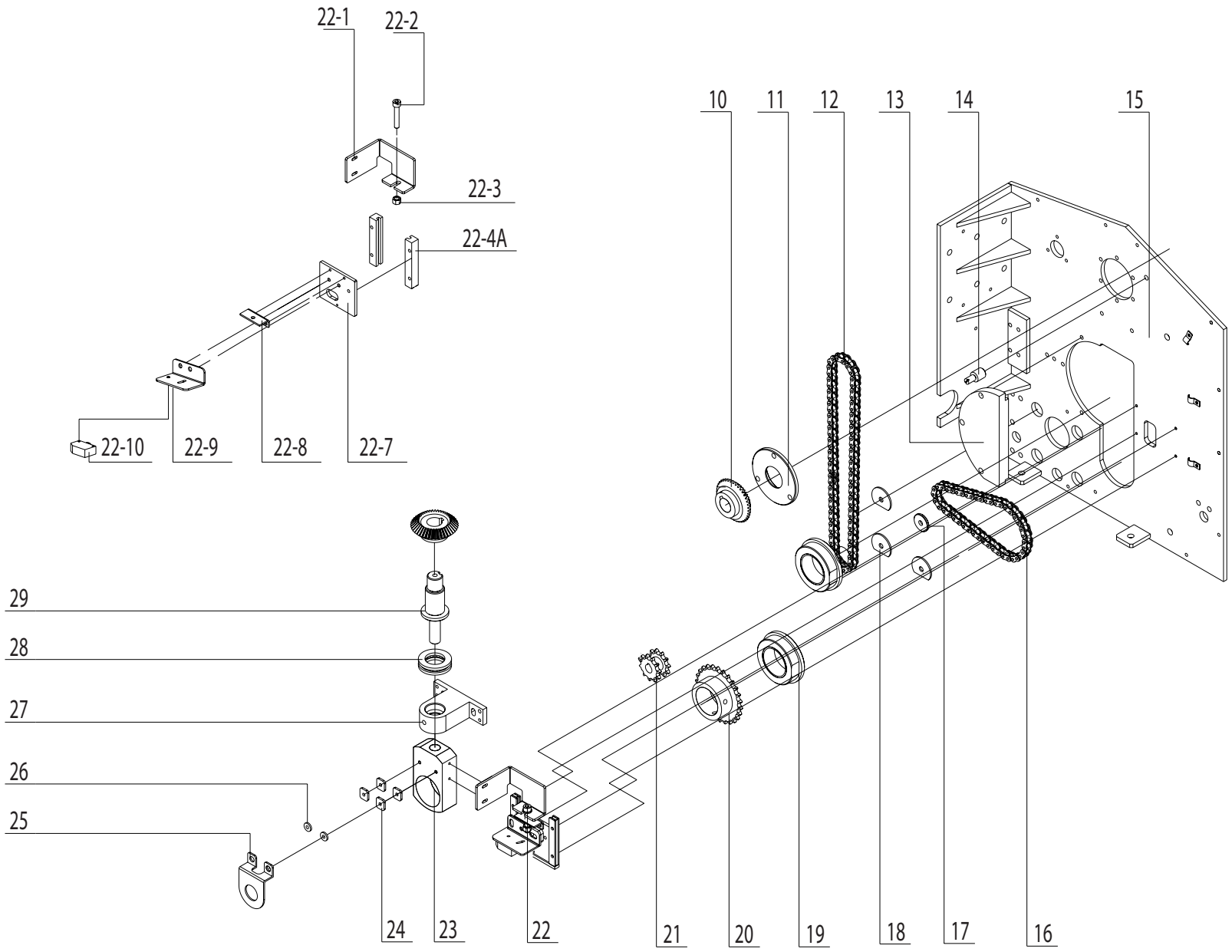
parts@gfpartnersllc.com

SERVICE:

service@gfpartnersllc.com

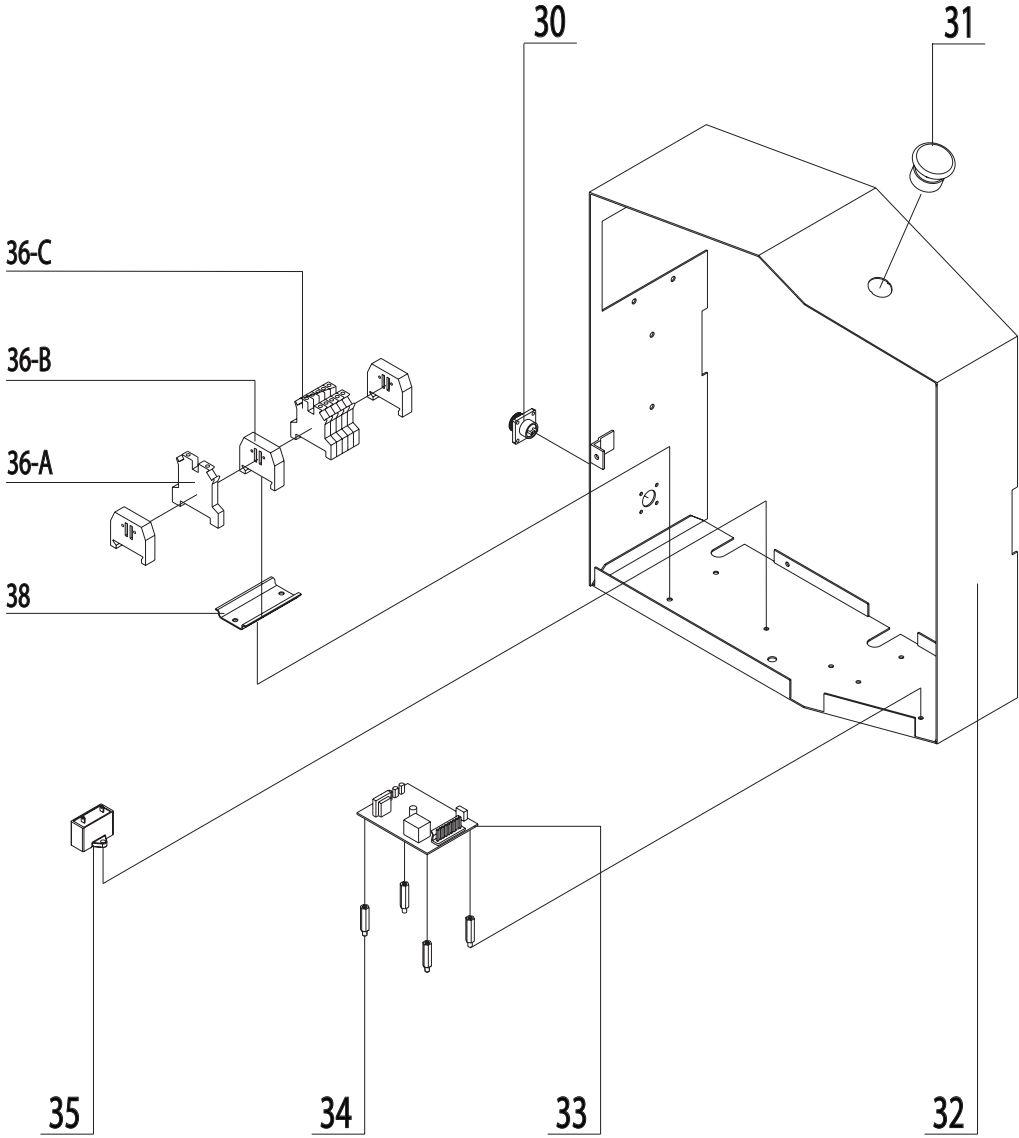


Drawing number	Part Number	Description	Notes
1	563-400	Left box end-cap	
2	563-401	Upper outward swing end-cap	
3	TH-114	Foot switch (assembly)	
4	TH-095	American 3-wire power cable	
5	563-133	Right box end-cap	
6	DH-008	Double handwheelφ160X16	
6A	TH-108	Handwheel Key	
7	TH-150	Adjustment screw (US)	
8	TH-047	Foundation adjusting screw	
9	563-402	Lower outward swing cover	

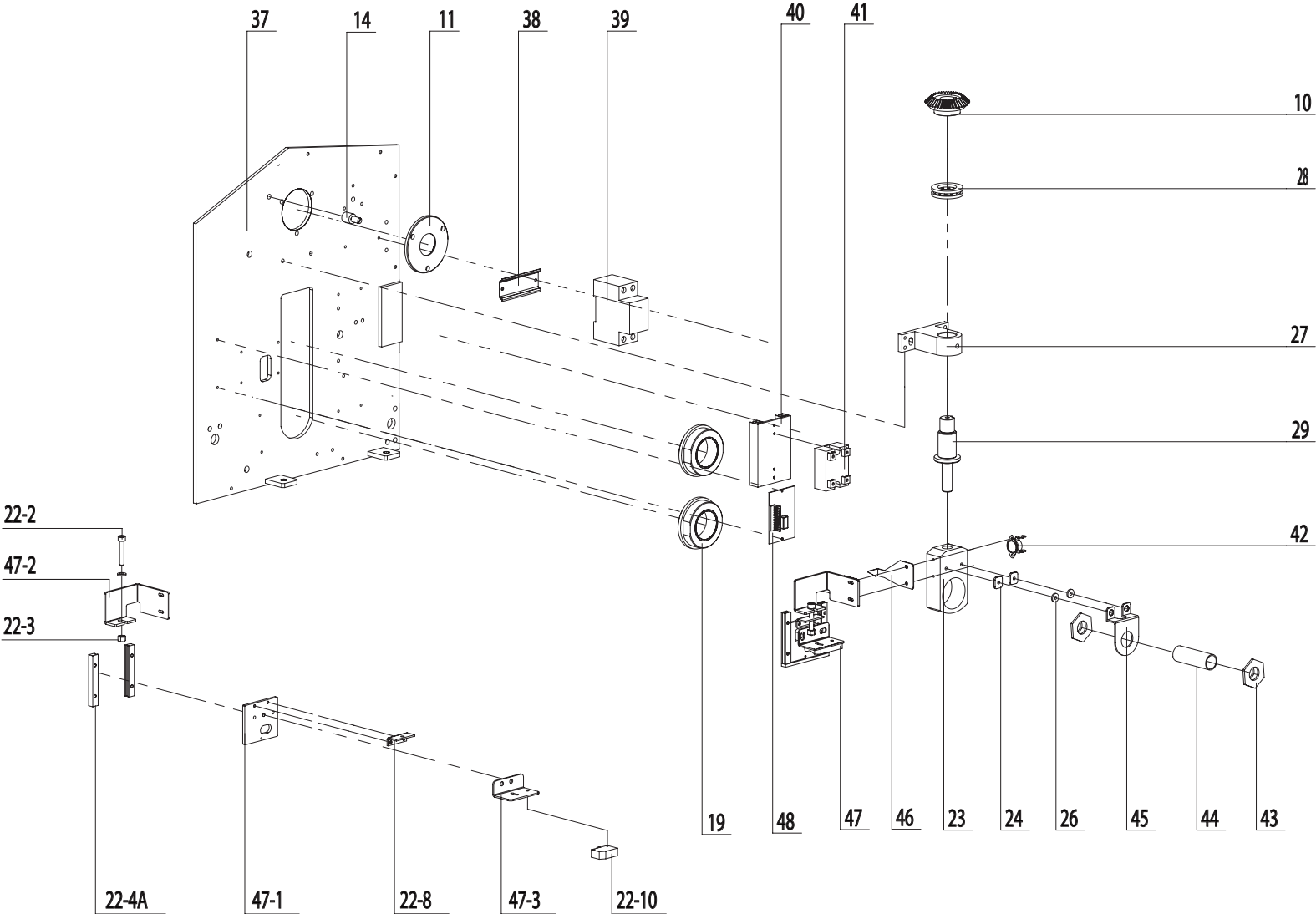


View 2 - Left Side lift Assembly and Chains

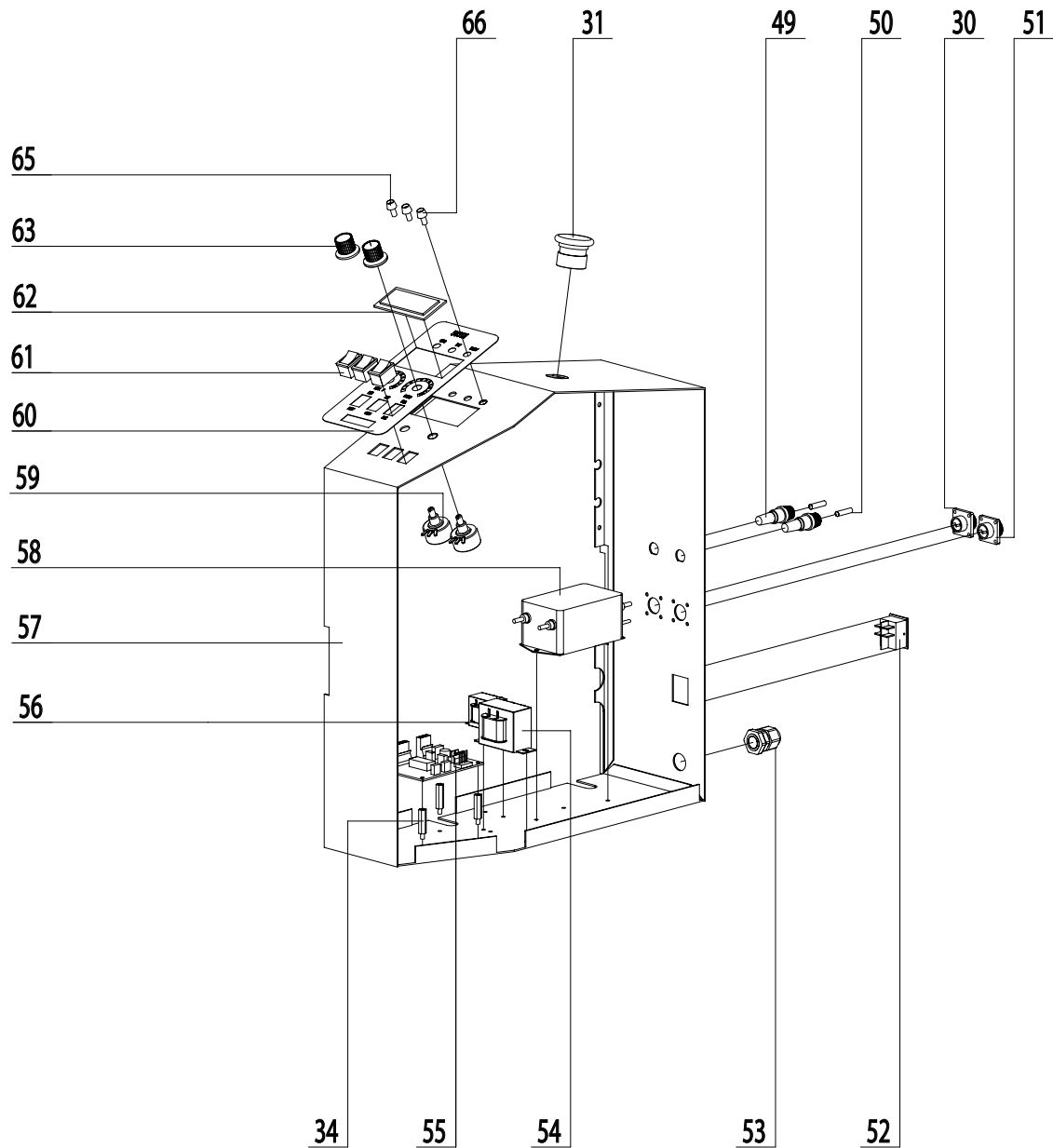
Drawing number	Part Number	Description	Notes
10	TH-016	Bevel gear	
11	355TH-092	Blue disc (assembly)	
12	TH-077	Chain	
13	563-403	Left support palte connecting plate	
14	TH-049	Front panel retaining pin	
15	563-404	Left support plate	
16	TH-078	Chain	
17	TH-157	90 motor gasket	
18	TH-030	Motor gasket 2	
19	TH-018	Bearing block	
20	TH-026	Roller sprocket	
21	563-194	Accelerating motor sprocket	
22	563-405	Left slide photoelectric eye assembly	
22-1	563-405-01	Left lifting plate	
22-2	563-405-02	Inner hexagonal cylindrical head screwM6*25	
22-3	563-405-03	1-type hexagonal nut M6	
22-4A	355TH-095	Guide bar	
22-7	563-405-04	Left photoelectric sliding plate	
22-8	355TH-094	Adjustment screw holder	
22-9	563-405-06	Omron photoelectric support left	
22-10	44TH-019	Photoelectric switch	
23	TH-041	Pressure adjusting block (assembly)	
24	355TH-062	Stainless steel leakage-proof barrier	
25	563-184	Left support of stainless steel heating pipe	
26	355TH-061	Stainless steel leakage-proof sleeve	
27	TH-039	Pressure adjusting support	
28	563-195	Thrust ball bearing51105	
29	TH-040	Pressure adjusting locating shaft	



View 3 - Left Side Cabinet

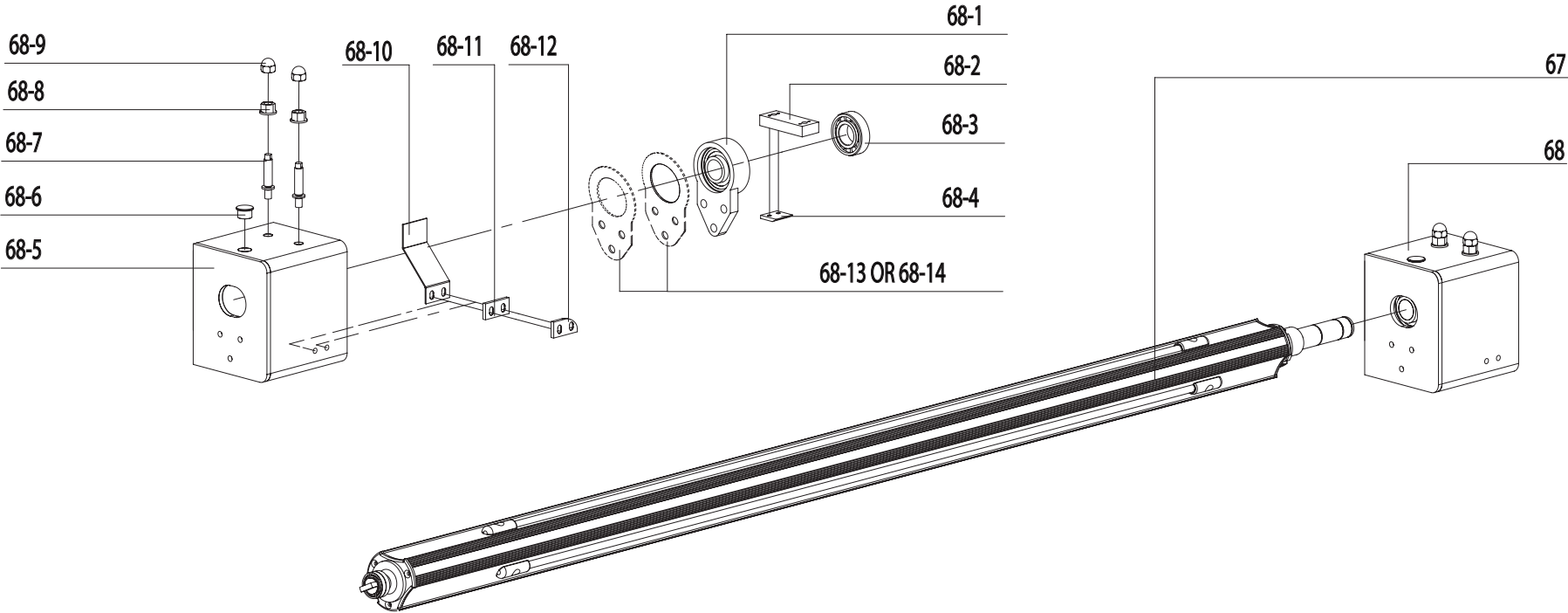


Drawing number	Part Number	Description	Notes
10	TH-016	Bevel gear	
11	355TH-092	Blue disc (assembly)	
14	TH-049	Front panel retaining pin	
19	TH-018	Bearing block	
22-2	563-405-02	Inner hexagonal cylindrical head screwM6*25	
22-3	563-405-03	1-type hexagonal nut M6	
22-4A	355TH-095	Guide bar	
22-8	355TH-094	Adjustment screw holder	
22-10	44TH-019	Photoelectric switch	
23	TH-041	Pressure adjusting block (assembly)	
26	355TH-061	Stainless steel leakage-proof sleeve	
24	355TH-062	Stainless steel leakage-proof barrier	
27	TH-039	Pressure adjusting support	
28	563-195	Thrust ball bearing51105	
29	TH-040	Pressure adjusting locating shaft	
37	563-407	Right support plate	
38	TH-130	Guide rail	
39	TH-134	Miniture circuit breaker	
40	TH-089	Cooling fin	
41	TH-090	Solid relay	
42	TH-091	Thermal protector	
43	563-197	M22X1.5 nut	
44	355TH-026	Stainless steel heating pipe sleeve	
45	563-180	Right support of stainless steel heating pipe	
46	563-198	Lifting indicator	
47	563-408	Right sliding photoelectric eye assembly	
47-1	563-408-01	Right photoelectric sliding plate	
47-2	563-408-02	Right lifting plate	
47-3	563-408-03	Omron photoelectric support right	
48	563-450	Photoelectric eye control panel	

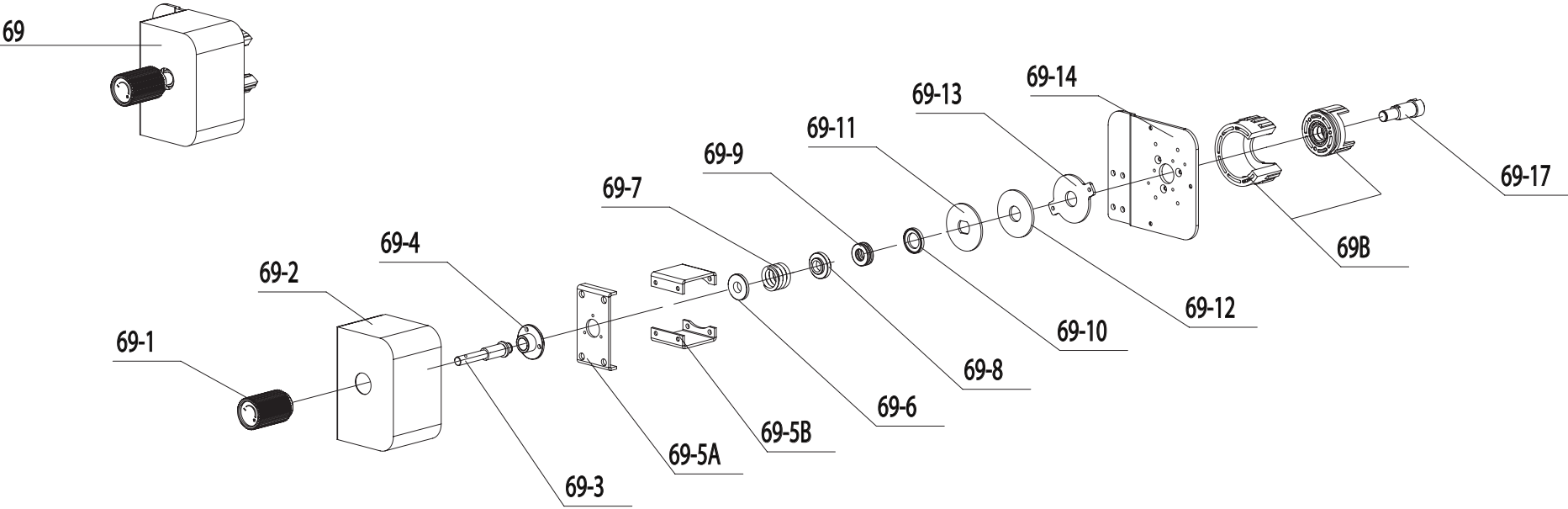


View 5 - Right Side Cabinet

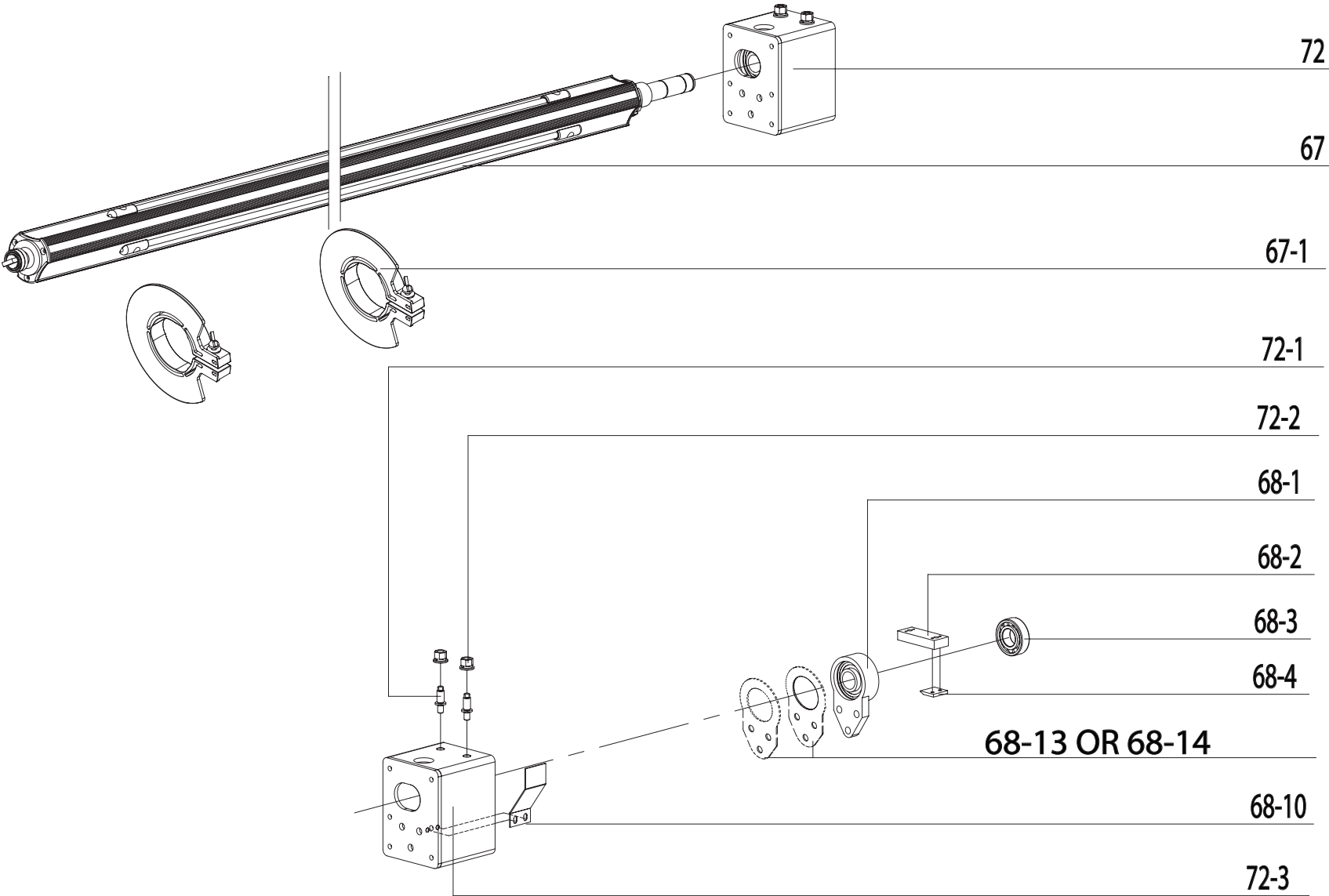
Drawing number	Part Number	Description	Notes
30	TH-113	WF series socket	
31	DH-048	Emergency stop switch	
34	TH-088	Circuit board support	
49	TH-094	Fuse holder	
50	355TH-090	Fuse	
51	TH-097	WS series socket	
52	TH-098	Power switch	
53	C-022	Line tightener	
54	563-448	15v Transformer	
54	55C-124	14v Transformer	
55	TH-092	Temperature control panel EMTN-T1.1	
56	55C-123	24v Transformer	
57	563-447	Right box	
58	355TH-020	Filter	
59	TH-099	Potentiometer	
60	563-409	Mask	
61	TH-106	Ship-type switch	
62	TH-104	LCD	
63	TH-105	Knob	
65	355TH-019	Red LED	
66	55C-030	Green LED	

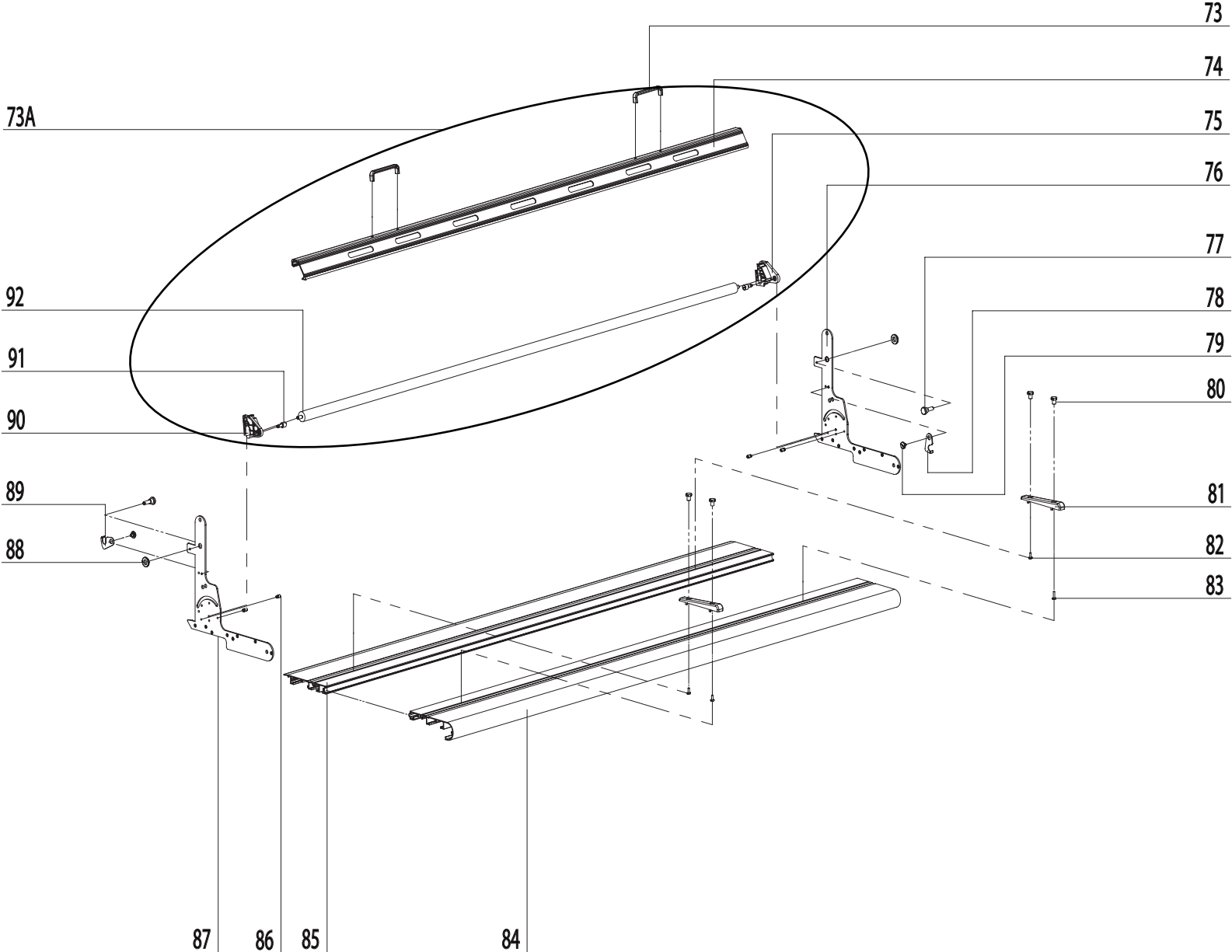


Drawing number	Part Number	Description	Notes
67	663TH-11	Outward swing feeding roller assembly	
68	563-411	Upper outward swing mechanism	
68-1	563-411-01	Insert bearing F205	
68-2	563-411-02	Cross arm	
68-3	563-411-03	Cylindrical ball bearing NUP205E	
68-4	563-411-04	outward swing gasket 563	
68-5	563-411-05	Upper outward swing support shell	
68-6	563-411-06	LPP photoelectric eye plug	
68-7	563-411-07	Upper outward swing support shell set screw	
68-8	563-411-08	I-type hexagonal nutM10(white nickel)	
68-9	563-411-09	Cap nut(white nickel)	
68-10	563-411-10	Leaf spring for large outward swing	
68-11	563-411-11	Leaf spring pad for outward swing	
68-12	563-411-12	Leaf spring pad 2 for outward swing	
68-13	563-451	Insert bearing shim 1	
68-14	563-452	Insert bearing shim 2	

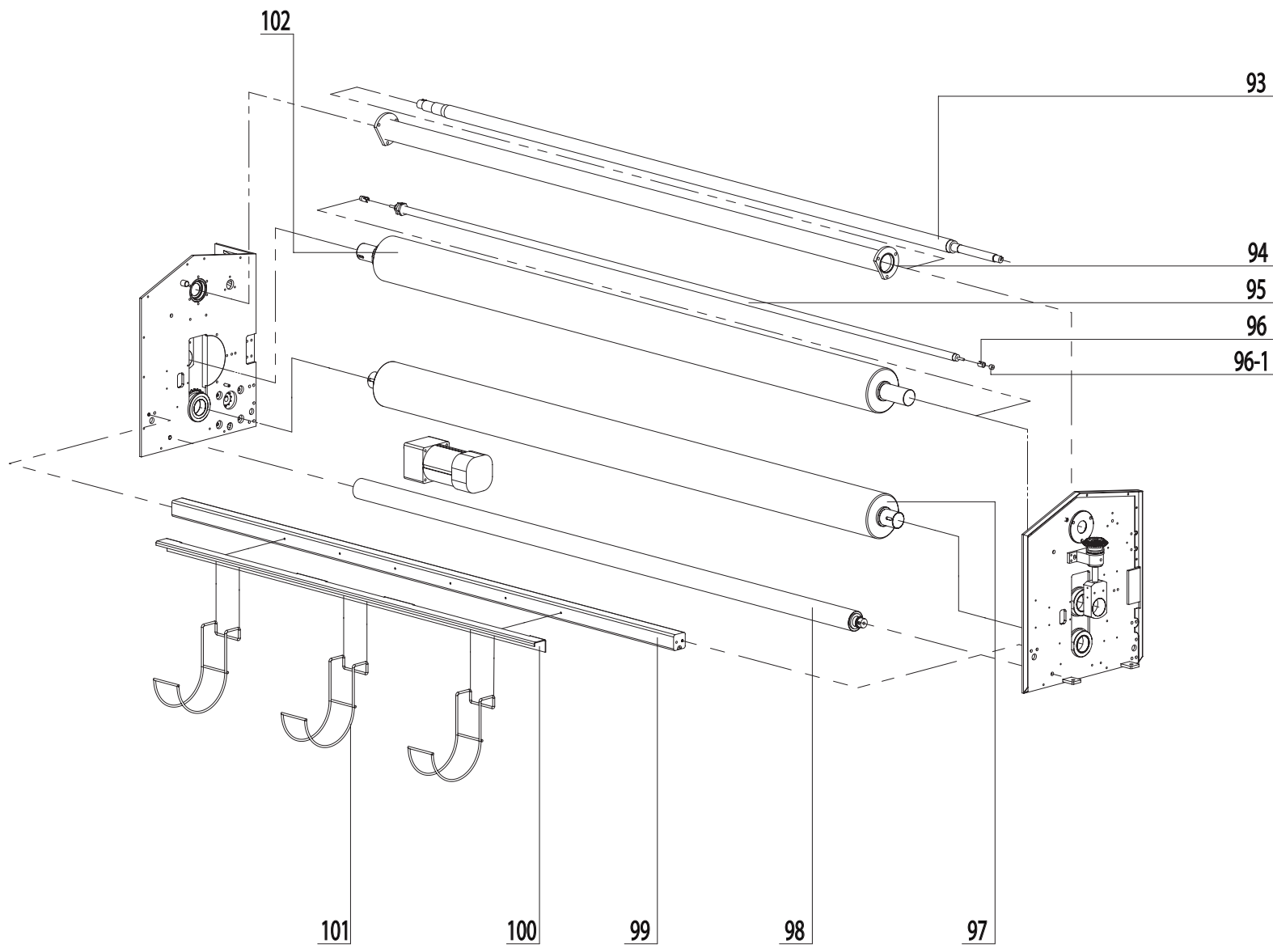


Drawing number	Part Number	Description	Notes
69	563-412	Upper outward swing damper	
69B	55C-137-01	Left Cradle Assembly	
69-1	55C-177	Fine tuning handle	
69-2	563-412-01	Upper outward swing damping cover	
69-3	355TH-081A	Unwinding pressure-adjusting shaft	
69-4	563-412-03	Damp adjusting nut	
69-5A	DH-271-01	Lateral support of outer swing damper	
69-5B	DH-271-02	Vertical support of outer swing damper	
69-6	355TH-074	Damper spring holder 2	
69-7	55C-166	Feeding roller pressure spring 3	
69-8	355TH-075	Damper spring holder 1	
69-9	55C-174	Thrust ball bearing51101	
69-10	355TH-073	Winding/unwinding upper spacer sleeve	
69-11	355TH-047	Winding/unwinding friction disc 1	
69-12	355TH-048	Winding/unwinding friction disc	
69-13	355TH-091	Winding/unwinding friction disc 3	
69-14	563-412-06	Feeding roller support frame (bending)	
69-17	563-412-07	Outward swing locating shaft	

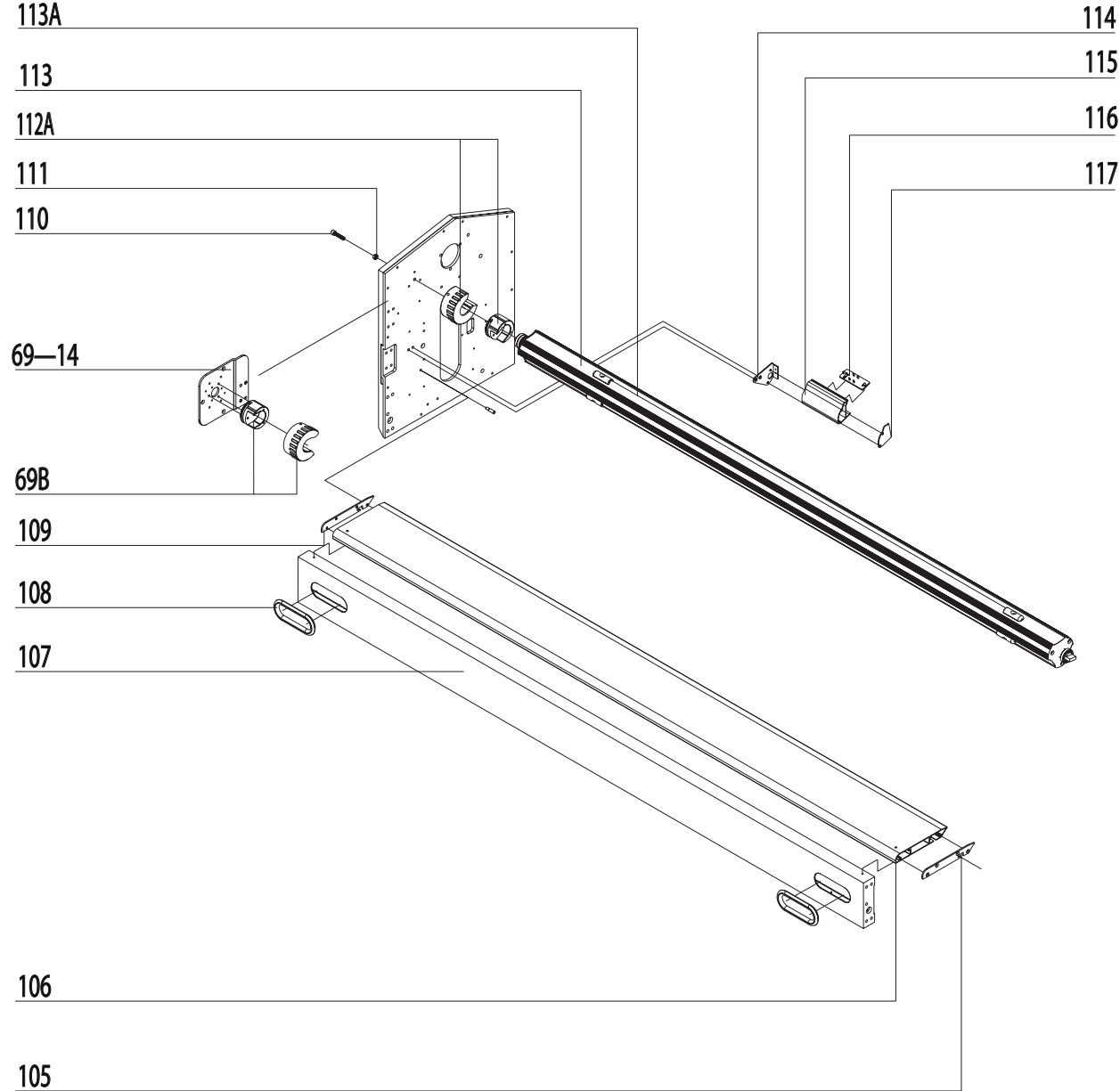




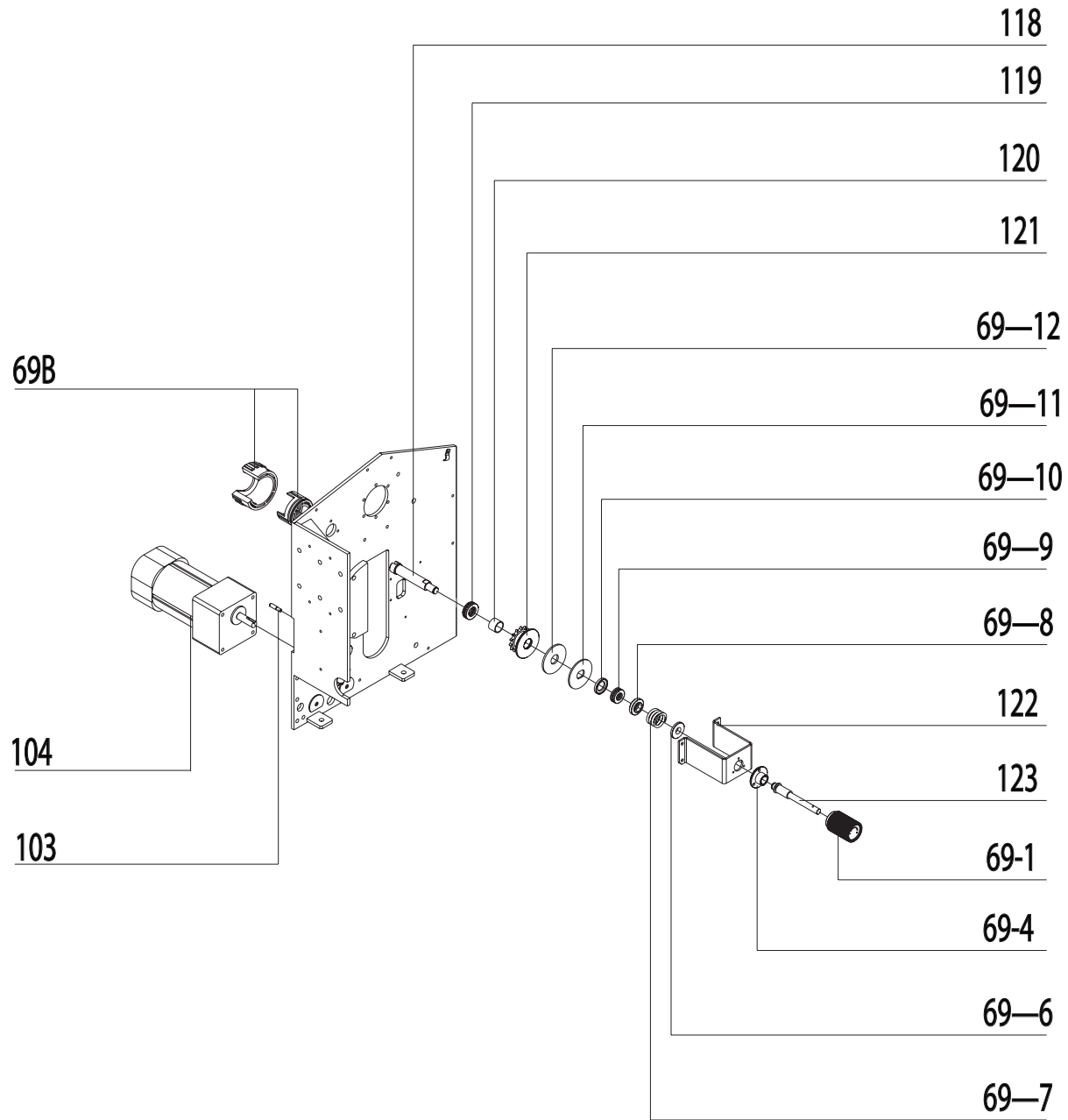
Drawing number	Part Number	Description	Notes
73A	63-124	Pressure Roller Assembly	
73	TH-131	Handle 006-96	
74	63-035	Front guard plate	
75	TH-036	Right mounting block of frong guard plate	
76	TH-067	Front panel right flip	
77	TH-064	Front panel locating screw	
78	563-199	Upper fixing hook of right flip	
79	563-200	Flip fixing hook pin	
80	TH-068	Locating plate fixing nut	
81	TH-069	Locating plate	
82	TH-070-01	Locating plate fixing screw (short)	
83	TH-070-02	Locating plate fixing screw (short)	
84	563-416	Front operation panel 2	
85	563-417	Front operation panel 1	
86	TH-156	Slotted headless shaft screw	
87	563-418	Left flip of front panel	
88	TH-062	Flip washer of front panel	
89	563-201	Upper fixing hook of left flip	
90	TH-033	Left mounting block of front guard plate	
91	563-202	Locating shaft 2 of front guard plate	
92	63-051	Pressure roller 1600	



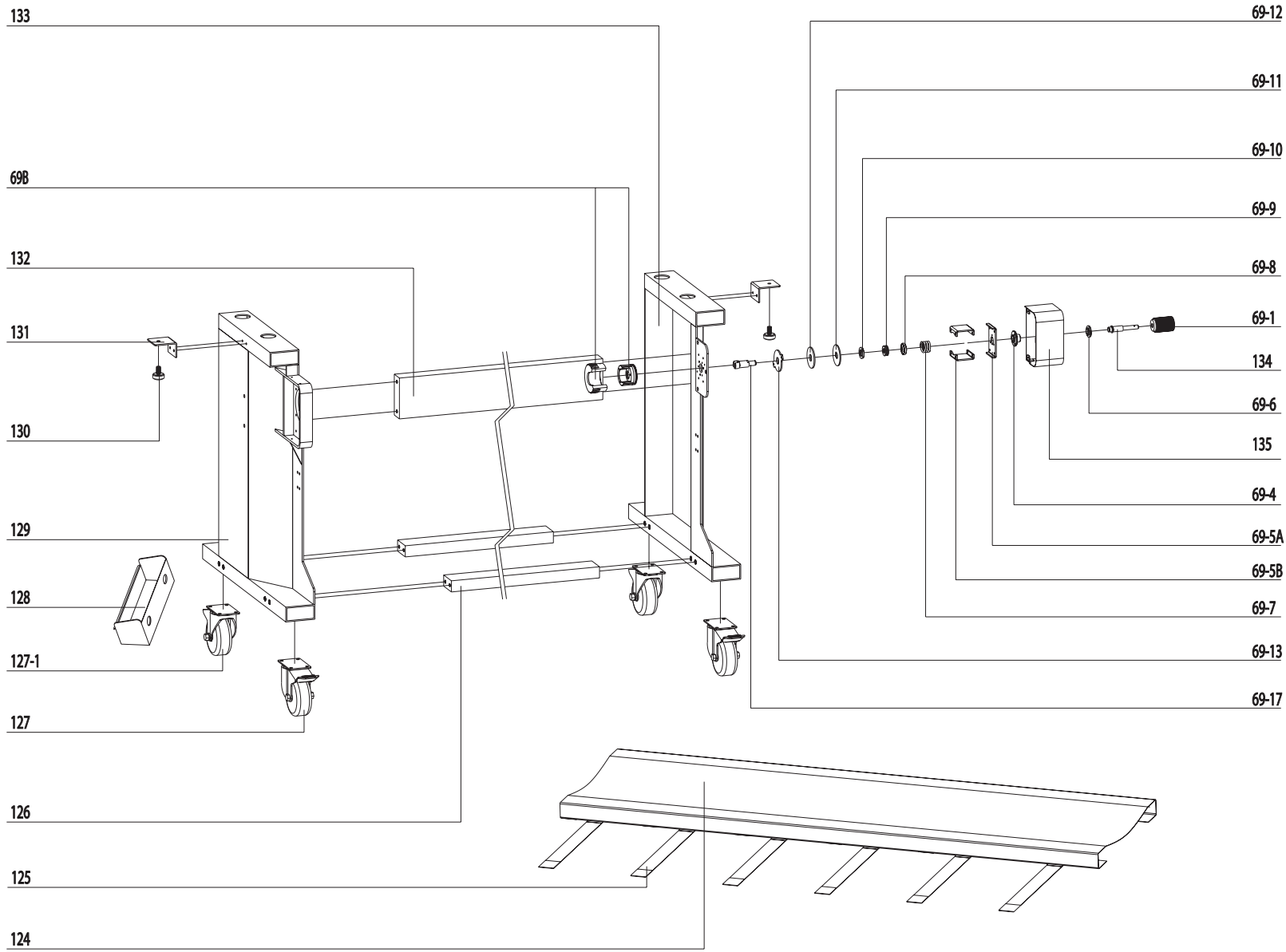
Drawing number	Part Number	Description	Notes
93	563-420	Pressure adjusting couple axle 1600	
94	563-173	Support pipe	
95	563-181	Stainless steel heating pipe	
96	563-203	Porcelain sleeve	
96-1	563-203-01	Porcelain cap	
97	63-028	Lower roller	
98	563-421	Lower support pipe 1600	
99	563-422	Upper support beam 1600	
100	563-423	Bracket mounting plate 1600	
101	TH-061	Bracket	
102	63-019	Upper roller	



Drawing number	Part Number	Description	Notes
69B	55C-137-01	Left Cradle Assembly	
69-14	563-412-06	Feeding roller support frame (bending)	
105	563-424	Left mounting plate of rear operation panel	
106	563-425	Rear operation panel	
107	563-426	Rear supporting beam 1600	
108	TH-024	Handguard rubber ring	
109	563-437	Right mounting plate of rear operation panel	
110	563-330	Socket head cap screw M6×35	
111	563-204	1-type Hexagonal nut M6	
112A	55C-139-01	Right Cradle Assembly	
113	363TH-013	Winding roller (assembly)	
113A	363TH-013-01	Rubber tube	
114	563-438	Sensor supporting beam fixing frame (left)	
115	TH-054	Sensor supporting frame	
116	TH-056	Non-contact sensor	
117	TH-053	Sensor supporting frame plug	

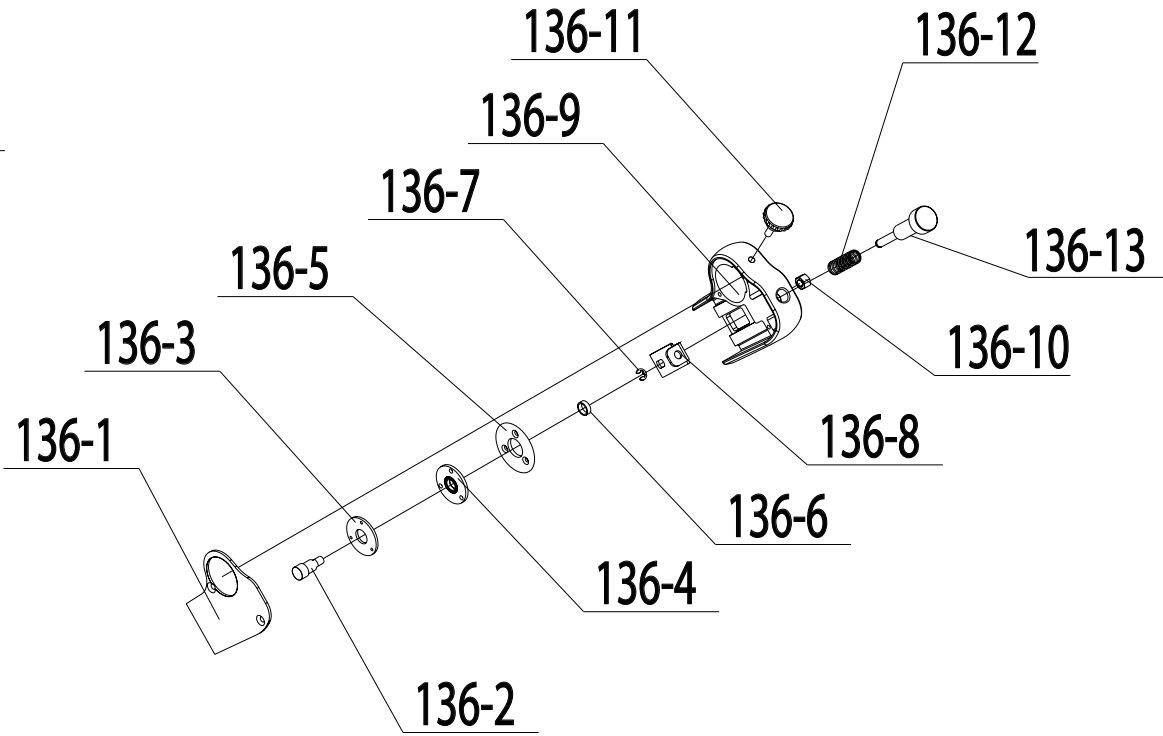
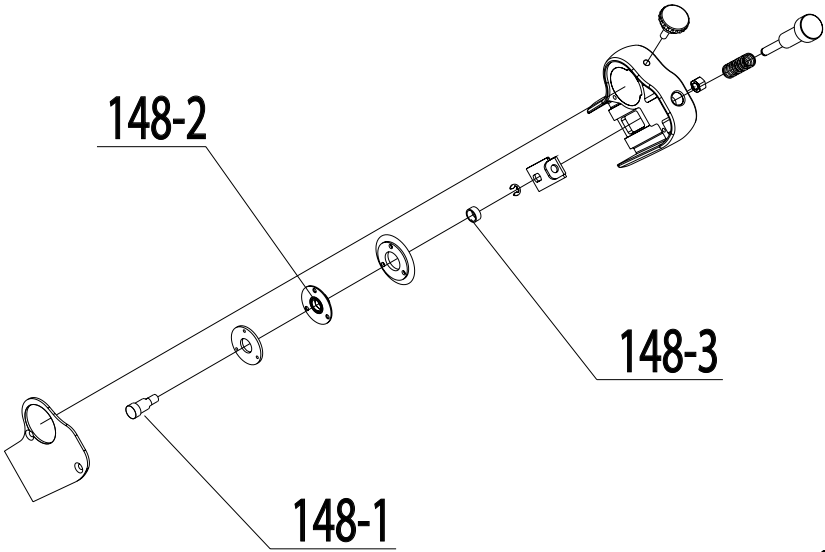


Drawing number	Part Number	Description	Notes
69B	55C-137-01	Left Cradle Assembly	
69-1	55C-177	Fine tuning handle	
69-4	563-412-03	Damp adjusting nut	
69-6	355TH-074	Damper spring holder 2	
69-7	55C-166	Feeding roller pressure spring 3	
69-8	355TH-075	Damper spring holder 1	
69-9	55C-174	Thrust ball bearing51101	
69-10	355TH-073	Winding/unwinding upper spacer sleeve	
69-11	355TH-047	Winding/unwinding friction disc 1	
69-12	355TH-048	Winding/unwinding friction disc	
103	TH-050	Rear panel locating pin	
104	563-079	Motor	
118	563-427	Backing paper sprocket locating shaft	
119	55C-179	Thrust ball bearing51103	
120	563-428	Pressure adjusting sleeve of backing paper roller 2	
121	563-429	Friction sprocket of backing paper roller	
122	563-430	Backing paper damping support	
123	563-431A	Backing paper thrust screw	

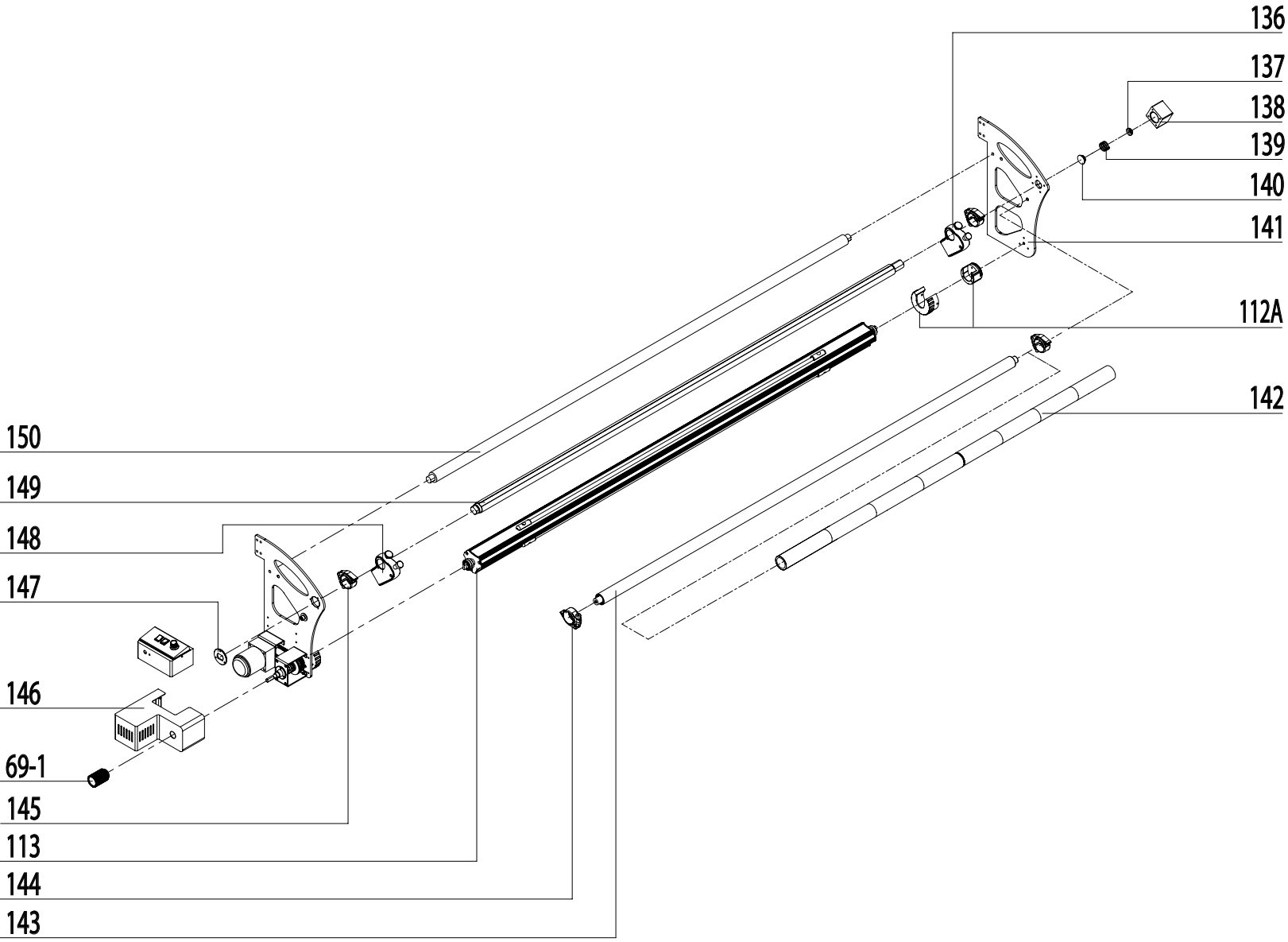


View 13 - Stand and Lower Unwind Brake

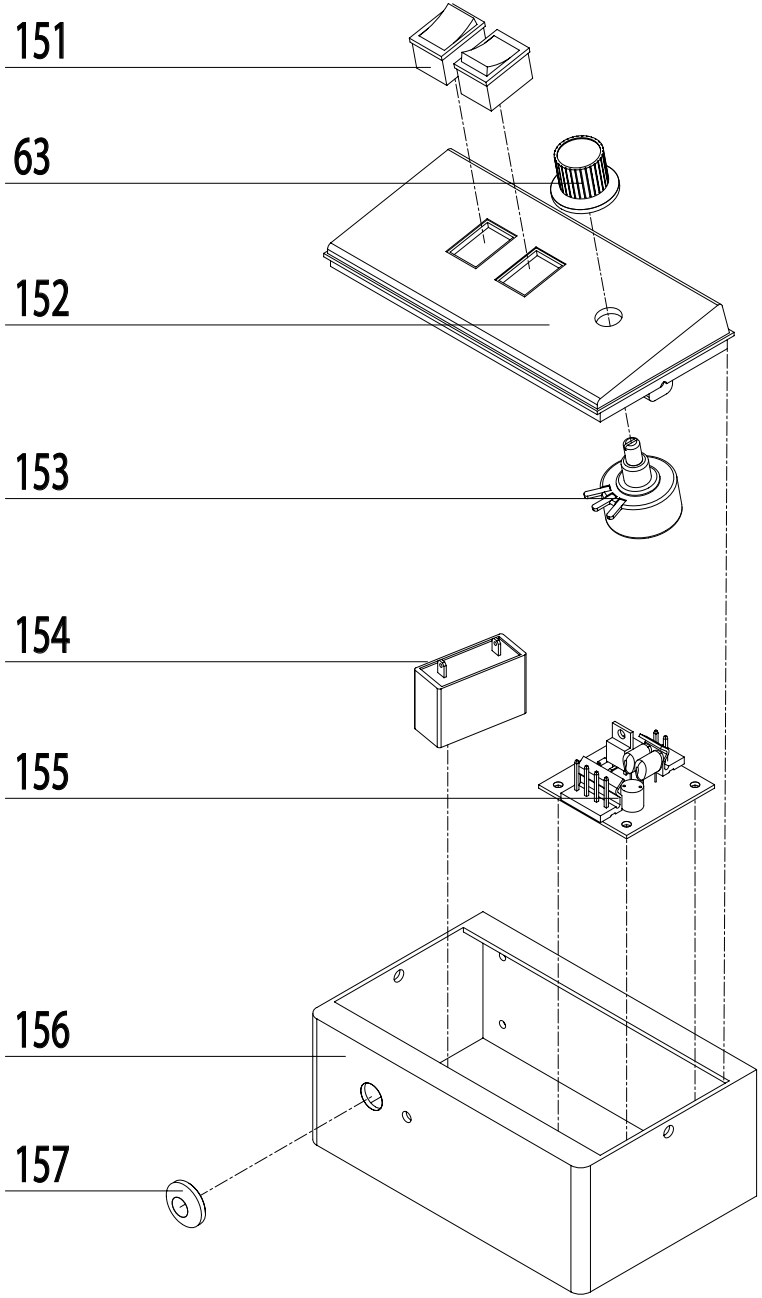
Drawing number	Part Number	Description	Notes
69B	55C-137-01	Left Cradle Assembly	
69-1	55C-177	Fine tuning handle	
69-4	563-412-03	Damp adjusting nut	
69-5A	DH-271-01	Lateral support of outer swing damper	
69-5B	DH-271-02	Vertical support of outer swing damper	
69-7	55C-166	Feeding roller pressure spring 3	
69-8	355TH-075	Damper spring holder 1	
69-9	55C-174	Thrust ball bearing51101	
69-10	355TH-073	Winding/unwinding upper spacer sleeve	
69-11	355TH-047	Winding/unwinding friction disc 1	
69-12	355TH-048	Winding/unwinding friction disc	
69-13	355TH-091	Winding/unwinding friction disc 3	
69-17	563-412-07	Outward swing locating shaft	
124	63C-051	Retainer cloth	
125	55C-052	Sticking tape	
126	563-432	Upper and lower supporting beams of the framework 1600	
127	TH-082	Trundle (with brake)	
127-1	TH-083	Caster without brake	
128	563-176	Tool box	
129	563-433	Left frame collumn	
130	563-164	Locating screw M8	
131	563-165	Leveling blendboard	
132	563-075	Middle supporting beam of the framework	
133	563-434	Right frame column	
134	563-435	Thrust screw	
135	563-436	Lower outward swing damp cover (unremovable)	

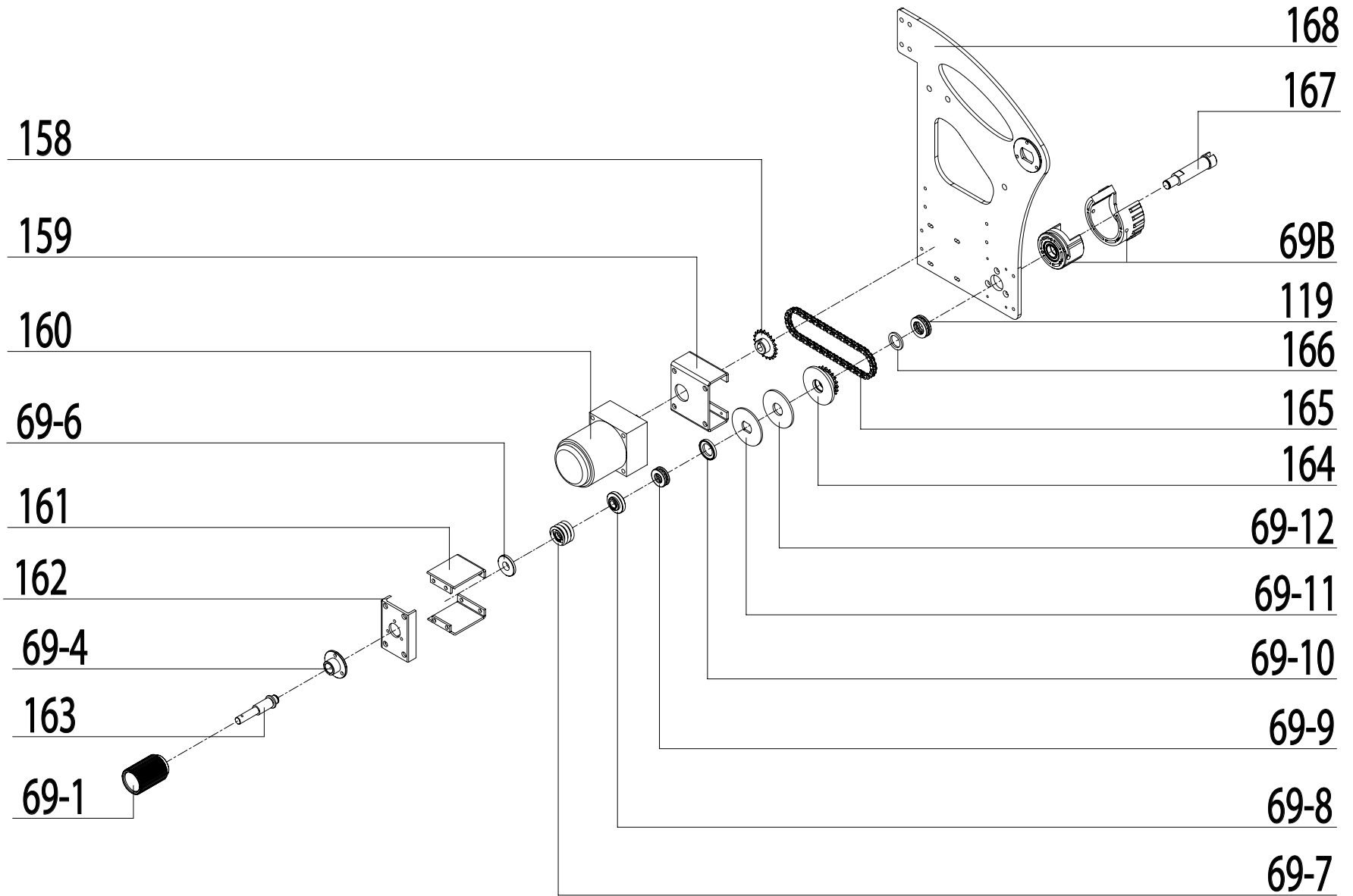


Drawing number	Part Number	Description	Notes
136	DH-278	Reverse blade head assembly	
136-1	DH-278-01	Blade shell cover	
136-2	DH-278-02	Blade fixing pin (reverse)	
136-3	DH-278-03	Bearing cover	
136-4	DH-278-04	Blade hub (reverse)	
136-5	DH-278-05	Cutting blade	
136-6	DH-278-06	Spacing sleeve (reverse)	
136-7	DH-278-07	GB T896-86 open retainer 4	
136-8	DH-278-08	Sliding plate	
136-9	DH-278-09	Blade shell	
136-10	DH-278-10	GB T41-20001 Hexagon nut C-class M6	
136-11	DH-278-11	Straight threaded handle M6	
136-12	DH-278-12	Adjustable roller spring	
136-13	DH-278-13	Compression spring screw	
148	DH-285	Positive blade head	
148-1	DH-285-01	Blade fixing pin (positive)	
148-2	DH-285-02	Blade hub (positive)	
148-3	DH-285-03	Spacing sleeve (positive)	

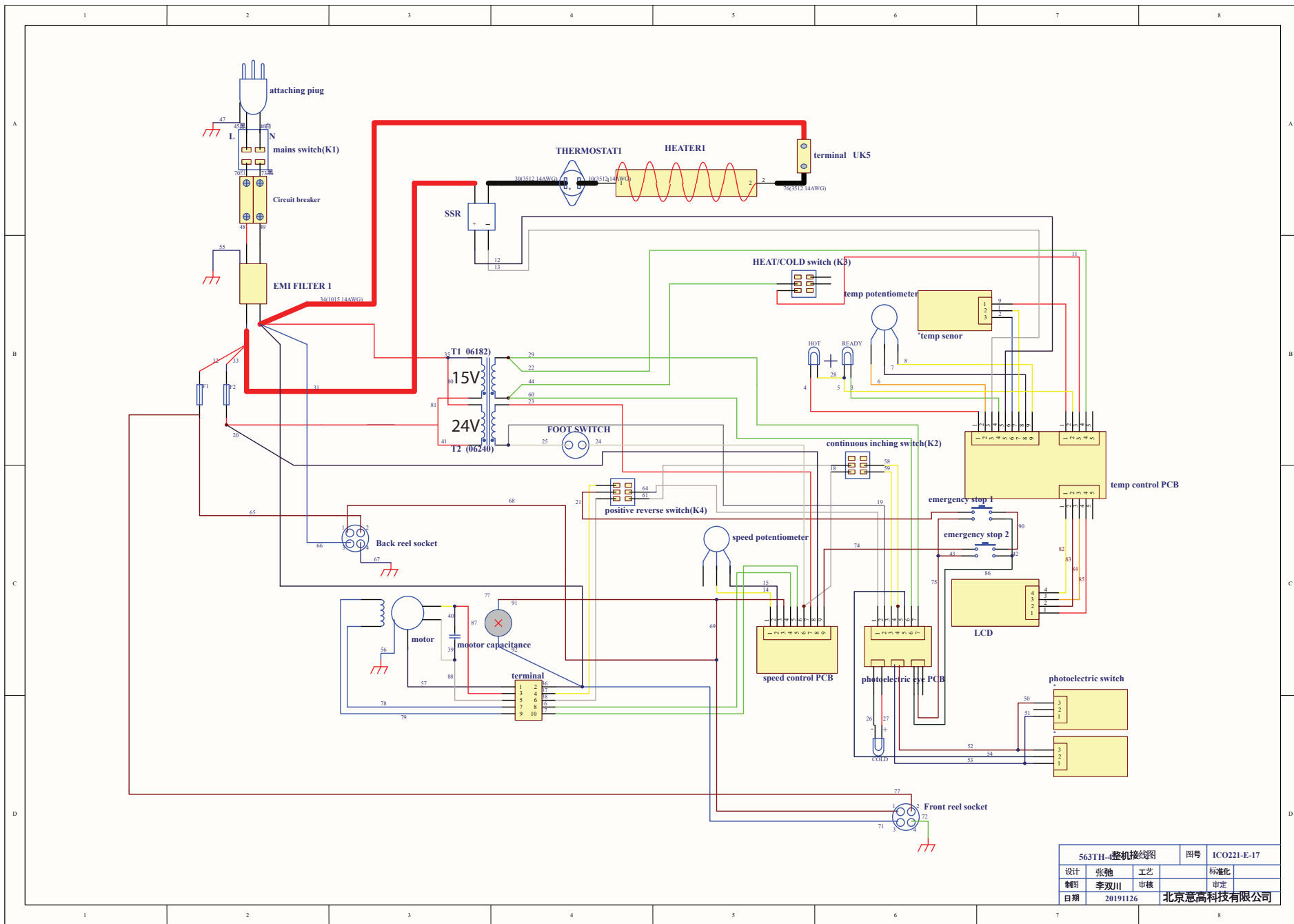


Drawing number	Part Number	Description	Notes
69-1	55C-177	Fine tuning handle	
112A	55C-139-01	Right Cradle Assembly	
113	363TH-013	Winding roller (assembly)	
136	DH-278	Reverse blade head	
137	563-217	Sprint holder 2 (Gfp)	
138	563-218	Supporting box (Gfp)	
139	563-216	Adjustable spring	
140	563-215	Spring holder (Gfp)	
141	DH-279	CK4 left support plate	
142	DH-280	Guide roller outer lining	
143	563-439	Guide roller	
144	DH-282	Outer lining locking limiter ³⁴	
145	563-440	Outer lining locking limiter ³²	
146	DH-283	CK4 motor housing	
147	DH-284	Left locating sleeve (Gfp)	
148	DH-285	Positive blade head	
149	563-441	Guide rod (Gfp)1600	
150	63C-004	Guide roller 1600	





Drawing number	Part Number	Description	Notes
69B	55C-137-01	Left Cradle Assembly	
68-1	563-411-01	Insert bearing F205	
68-4	563-411-04	outward swing gasket 563	
68-6	563-411-06	LPP photoelectric eye plug	
68-7	563-411-07	Upper outward swing support shell set screw	
68-8	563-411-08	I-type hexagonal nutM10(white nickel)	
68-9	563-411-09	Cap nut(white nickel)	
68-10	563-411-10	Leaf spring for large outward swing	
68-11	563-411-11	Leaf spring pad for outward swing	
68-12	563-411-12	Leaf spring pad 2 for outward swing	
119	55C-179	Thrust ball bearing51103	
158	DH-242	Motor sprocket	
159	DH-288	CK4 motor connecting board	
160	563-446	110V AC Single-phase asynchronous machine	
161	DH-289	Vertical damp support	
162	DH-290	Vertical damp support	
163	DH-291A	Thrust screw	
164	DH-292	Cutter damp sprocket	
165	DH-293	Chain 04H 56 pitch	
166	DH-294	Sprocket spacing sleeve	
167	DH-295	CK4 Locating shaft	
168	DH-296	CK4 right support plate	



563TH-整机接线图			图号	IC0221-E-17
设计	张弛	工艺		标准化
制图	李双川	审核		审核
日期	20191126		北京意高科技	