



DO NOT duplicate or make any changes to this manual without express written consent from Gfp

## Parts Manual Gfp 255C-1/263C-1



Starting SN# 2009255C-1 093  
Starting SN# 2009263C-1 035  
November 2023

1. Exploded Drawings

View 1 - Laminator and Stand Assembly

View 2 - Left Side Cabinet

View 3 - Right Side Cabinet

View 4 - Stand Assembly

View 5 - Right Unwind Assembly

View 6 - Left Unwind Assembly

View 7 - Unwind and Rewind Shafts

View 8 - Wiring Diagram

CORRESPONDENCE:

Graphic Finishing Partners LLC  
PO Box 1097  
Maryland Heights, MO. 63043  
800-986-2005

[sales@gfpartnersllc.com](mailto:sales@gfpartnersllc.com)

[www.gfpartnersllc.com](http://www.gfpartnersllc.com)

SHIPPING:

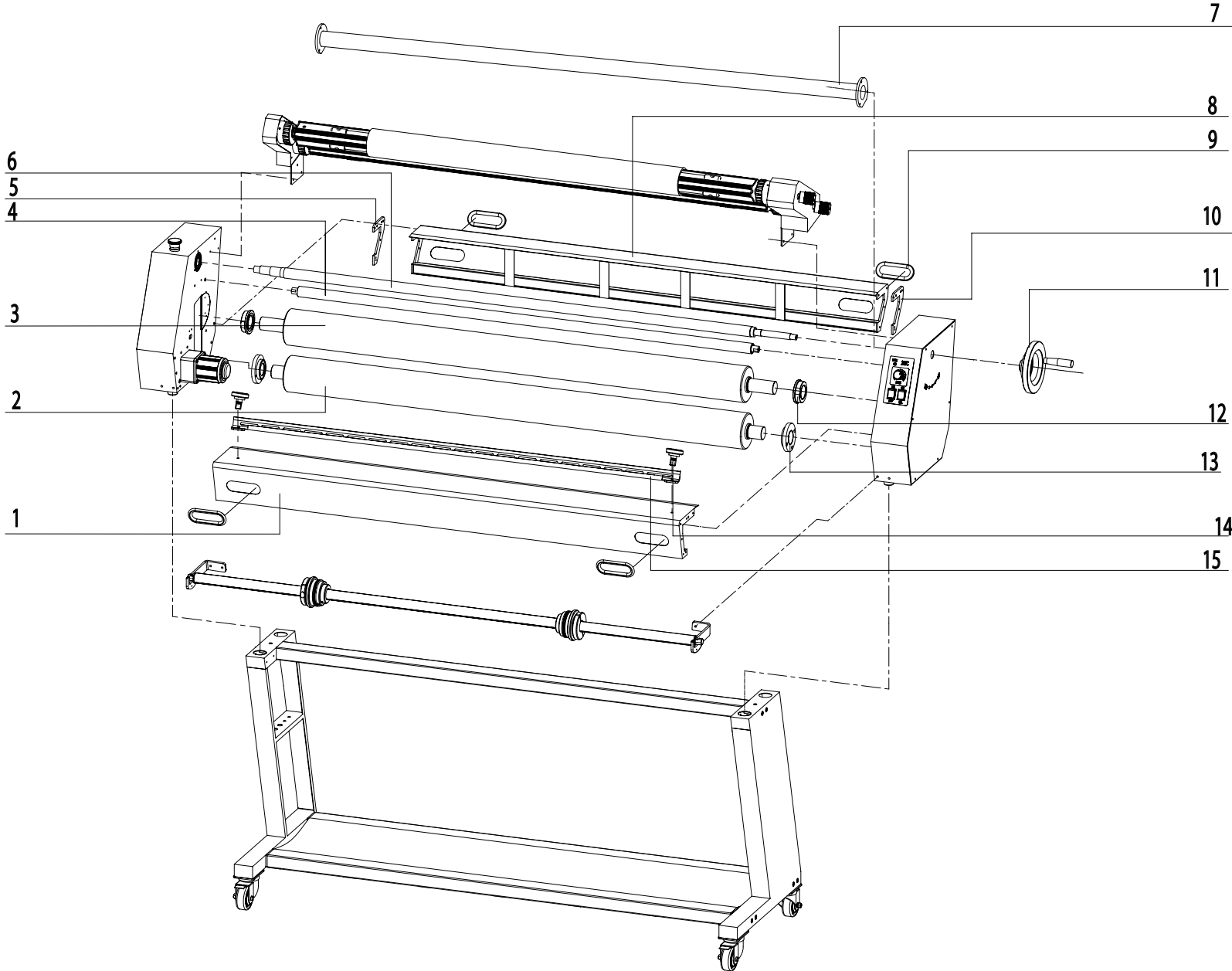
Graphic Finishing Partners LLC  
13878 Parks Steed Drive  
Earth City, MO. 63045

PARTS:

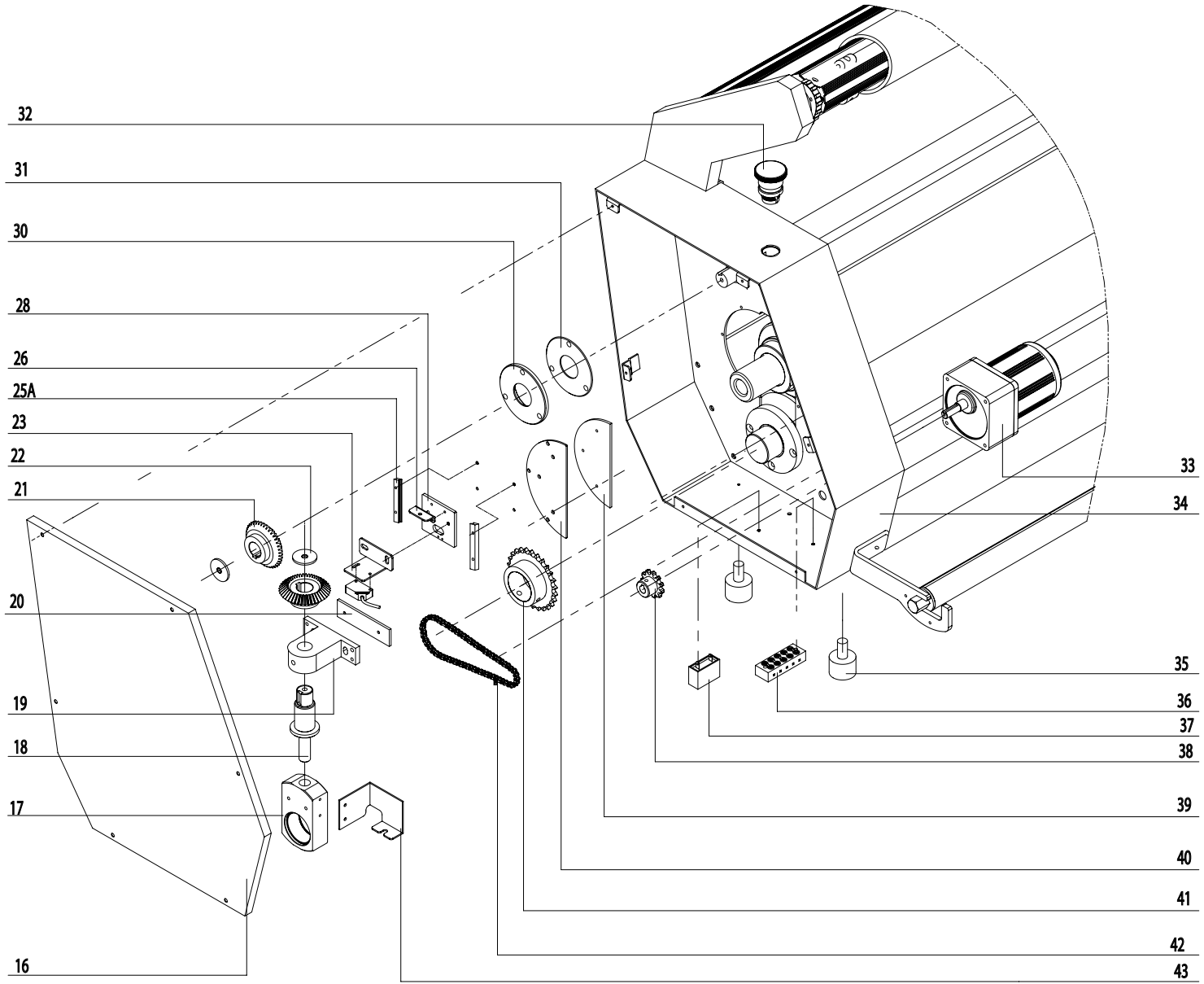
[parts@gfpartnersllc.com](mailto:parts@gfpartnersllc.com)

SERVICE:

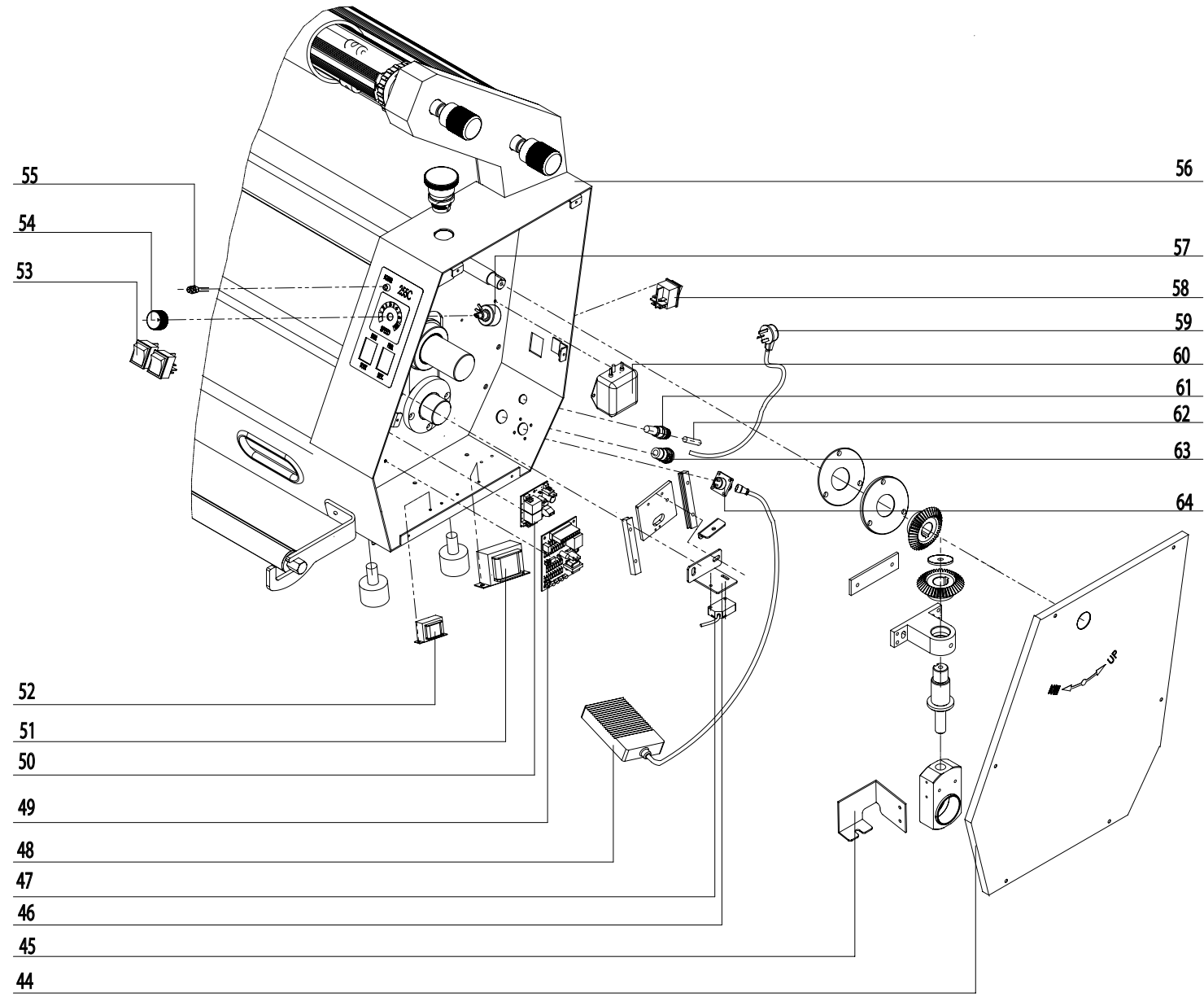
[service@gfpartnersllc.com](mailto:service@gfpartnersllc.com)



Drawing number	Part Number	Description	Notes
1	55C-200	Front support 255C	
	63C-200	Front support 263C	
2	55C-002	Lower rubber roller 255C	
	63C-002	Lower rubber roller 263C	
3	55C-003	Upper rubber roller 255C	
	63C-003	Upper rubber roller 263C	
4	55C-004	Guide roller 1400	
	63C-004	Guide roller 1600	
5	55C-201	Rear right patch	
6	55C-202	Pressure-adjusting couple axis 255C	
	63C-202	Pressure-adjusting couple axis 263C	
7	55C-203	Upper support pipe1400	
	63C-203	Upper support pipe1600	
8	55C-204	Rear support 255C	
	63C-204	Rear support 263C	
9	TH-024	Handguard rubber ring	
10	55C-205	Rear left patch	
11	DH-008	Double-handwheel	
12	TH-018	Bearing block	
13	55C-206	Bearing block	
14	55C-159	Film-feeding plate bolt	
15	55C-155A	1400 Film-feeding pressing plate	
	63C-155A	1600 Film-feeding pressing plate	

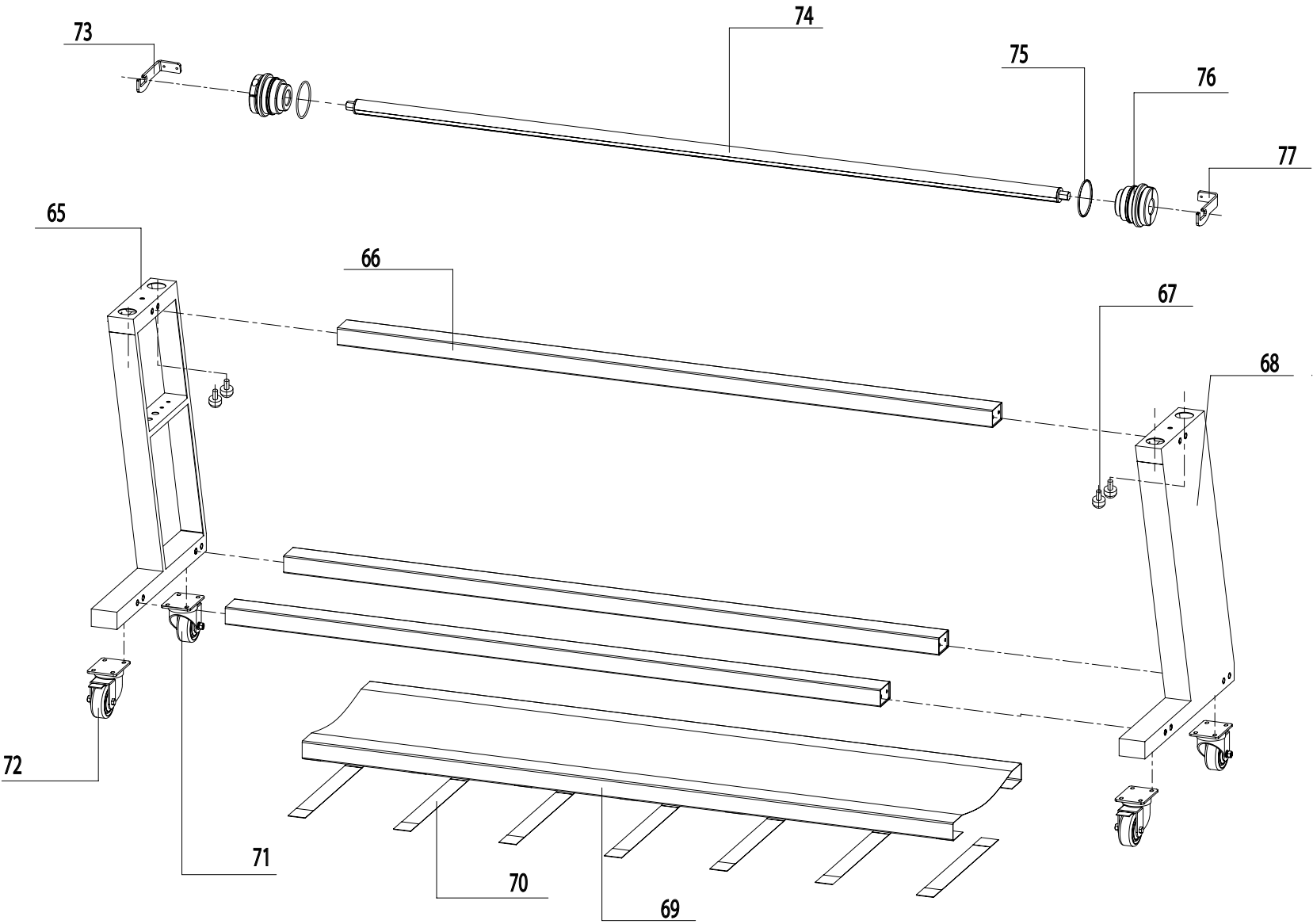


Drawing number	Part Number	Description	Notes
16	55C-011	Left end cover	
17	55C-160	Pressure-adjusting block	
18	55C-180	Pressure-adjusting locating shaft	
19	TH-039	Pressure-adjusting support	
20	55C-207	Adjusting pad of pressure regulating support	
21	TH-016	Bevel gear	
22	TH-004	Catch	
23	55C-208	Photo eye left braket	
24	TH-118	Guide rail bar (1)	
25	TH-119	Lower barrier strip	
25A	355TH-095	Guide rail bar	
26	355TH-094	Adjustment screw holder	
27	TH-121	Guide rail bar (2)	
28	TH-122	Lifting photoelectric sliding plate	
29	TH-123	Guide rail adjusting strip	
30	55C-209	Blue disc assembly	
31	55C-210	Blue disc adjusting pad	
32	DH-048	Emergency stop switch	
33	55C-019	Motor	
34	55C-211	Left tank	
35	TH-150	Foundation adjusting bolt (American)	
36	TH-085	Five-wiring terminals	
37	55C-024	Capicitor	
38	55C-025	Small sprocket	
39	55C-212	Semi-cycle liner	
40	55C-213	Semi-cycle reinforcing plate	
41	55C-026	Rubber roller sprocket	
42	55C-027	Chain	
43	55C-161	Left lifting board	



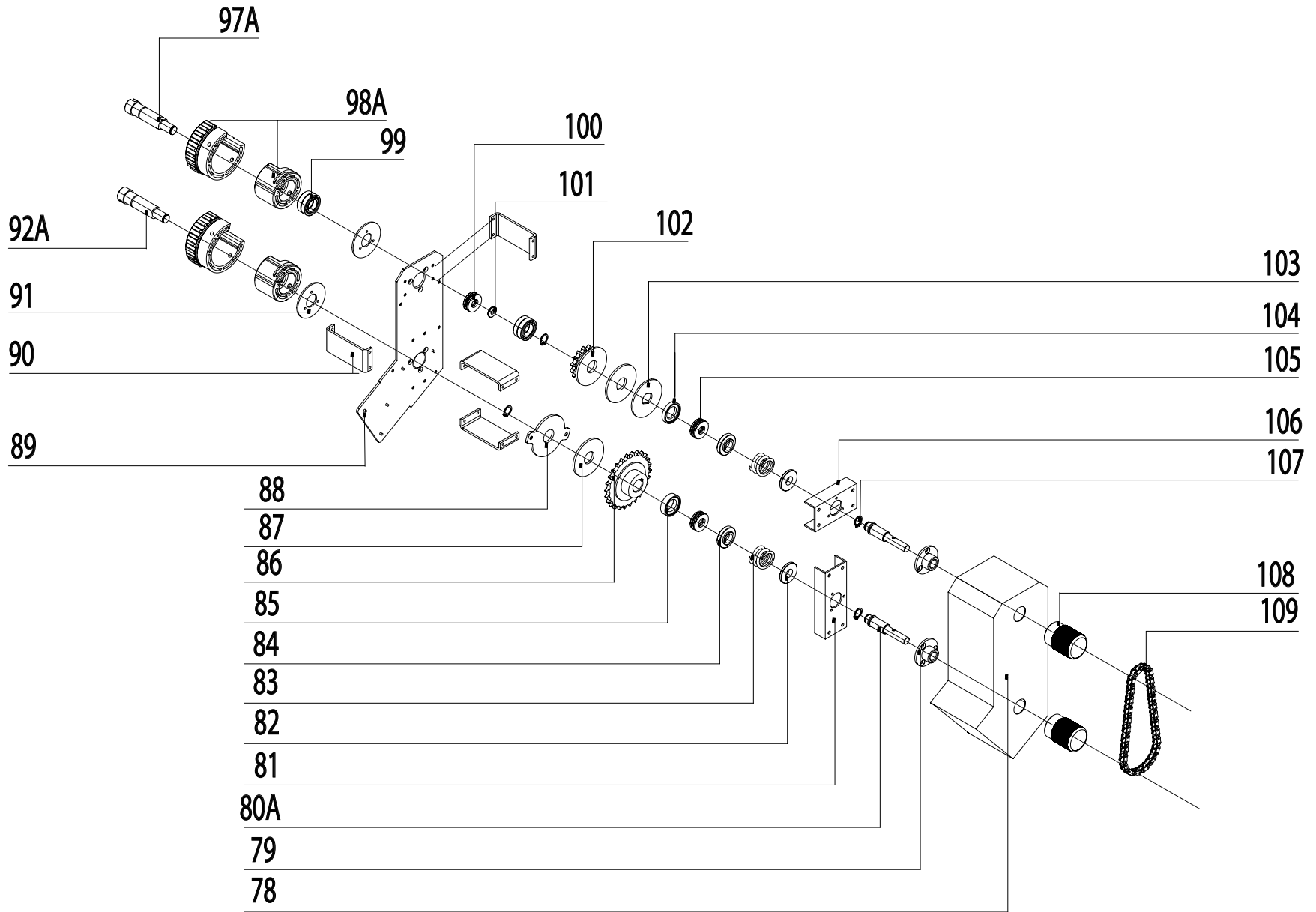
Drawing number	Part Number	Description	Notes
44	55C-043	Right end cover	
45	55C-162	Right lifting board	
46	55C-214	Photo eye right braket	
47	44TH-019	Photoelectric sensor	
48	TH-111	Pedal switch	
49	55C-158	Speed-adjusting pannel	
50	563-450	Photoelectric control panel	Starting 6/21
51	55C-123	Transformer 24V	
52	55C-124	Transformer 14V	
53	55C-039	Rocker switch	
54	C-017	Knob	
55	55C-030	Emitting Diode (including lamp holder)	
56	55C-215	Right tank	
57	TH-099	Potionmeter	
58	TH-098	Rocker switch	
59	C-021	American 3-line power cable	
60	C-020	Filter	
61	TH-094	Fuse base	
62	55C-181	Fuse	
63	C-022	Wire grip	
64	TH-097	Aviation plug	





View 4 - Stand Assembly

Drawing number	Part Number	Description	Notes
65	55C-125	Frame left support	
66	55C-045	Supporting beam 255C	
	63C-045	Supporting beam 263C	
67	TH-047	Foundation adjustment bolt	
68	55C-126	Frame right support	
69	55C-051	Retainer cloth 255C	
	63C-051	Retainer cloth 263C	
70	55C-052	Sticking strip	
71	55C-053	Gray trundle glue 75	
72	55C-054	Gray trundle glue 75 brake	
73	55C-127	Left feed roller support	
74	55C-046	Front feed roller 255C	
	63C-046	Front feed roller 263C	
75	C-030	Unwinding feeding roller support plate (1)	
76	TH-003	Limiting sleeve of feeding roller adjustment	
77	55C-128	Right feed roller support	

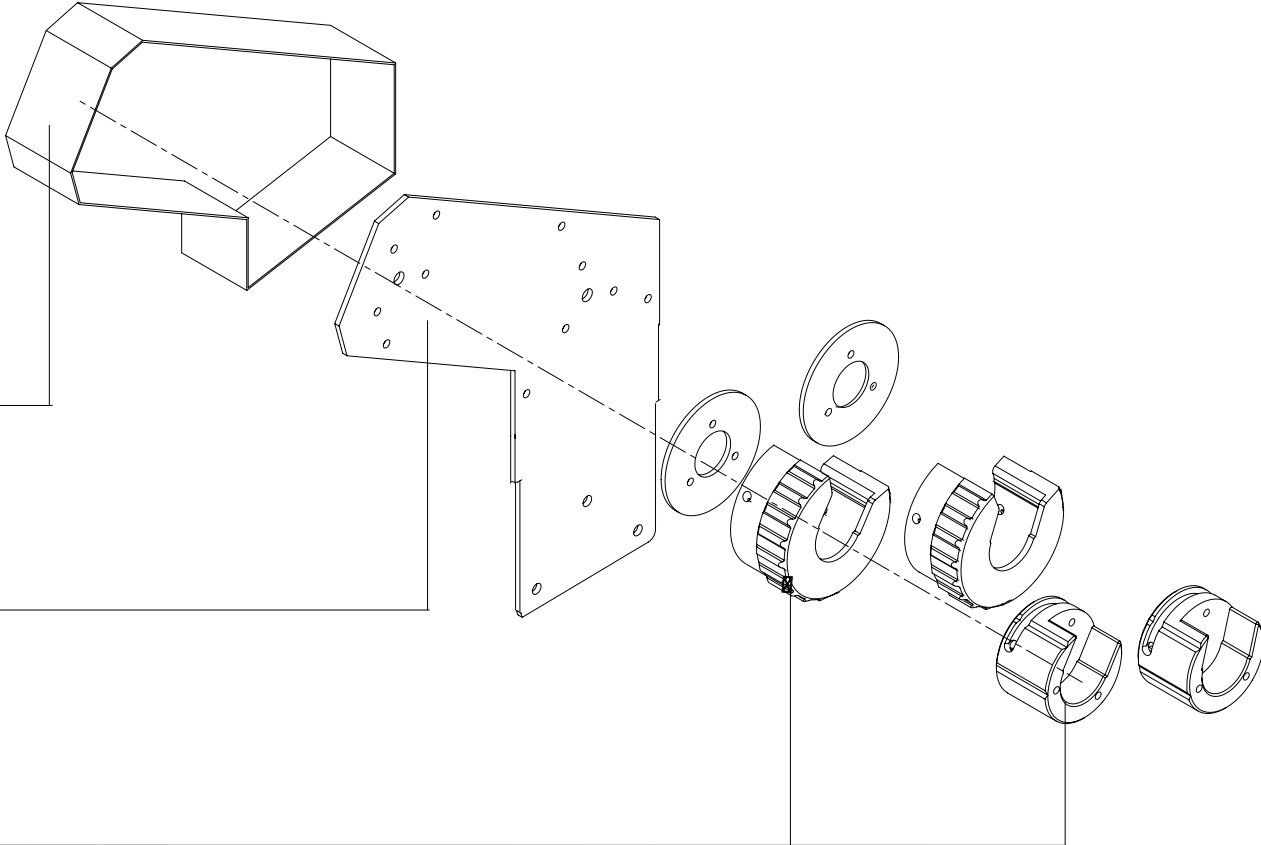


Drawing number	Part Number	Description	Notes
115	55C-223	Right Unwind Assembly Complete	
78	55C-216	Right tank of winding/unwinding roller	
79	55C-163	Damp adjusting nut	
80A	55C-164A	Winding/unwinding pressure-adjusting shaft	
81	55C-165	Damp handle supporting plate (1)	
82	355TH-074	Damp spring seat (2)	
83	55C-166	Feeding roller pressure spring(3)	
84	355TH-075	Damp spring seat (1)	
85	55C-167	Damp adjusting holder (2)	
86	355TH-037	26-tooth sprocket of winding/unwinding feeding roller	
87	355TH-048	winding/unwinding friction disc	
88	355TH-091	winding/unwinding friction disc 3	
89	55C-217	Right support plate of winding/unwinding roller	
90	55C-168	Damp support	
91	55C-219	Backing plate of winding support	
92A	355TH-71	Lower positioning axis of winding and unwinding	
97A	355TH-72	Reeling positioning shaft	
98A	55c-137-01	Left Collar Assembly	
99	55C-171	Deep-groove ball bearing	
100	55C-179	Thrust ball bearing 51103	
101	55C-172	Winding supporting sleeve pad	
102	355TH-34	14-tooth sprocket of winding/unwinding feeding roller	
103	355TH-47	winding/unwinding friction disc (1)	
104	55C-173	Damp adjusting holder (1)	
105	55C-174	Thrust ball bearing 51101	
106	55C-175	Damp handle supporting plate (2)	
107	55C-176	Retainer ring for shaft 12	
108	55C-177	Non-scale fine-tuning handle	
109	55C-178	Chain	

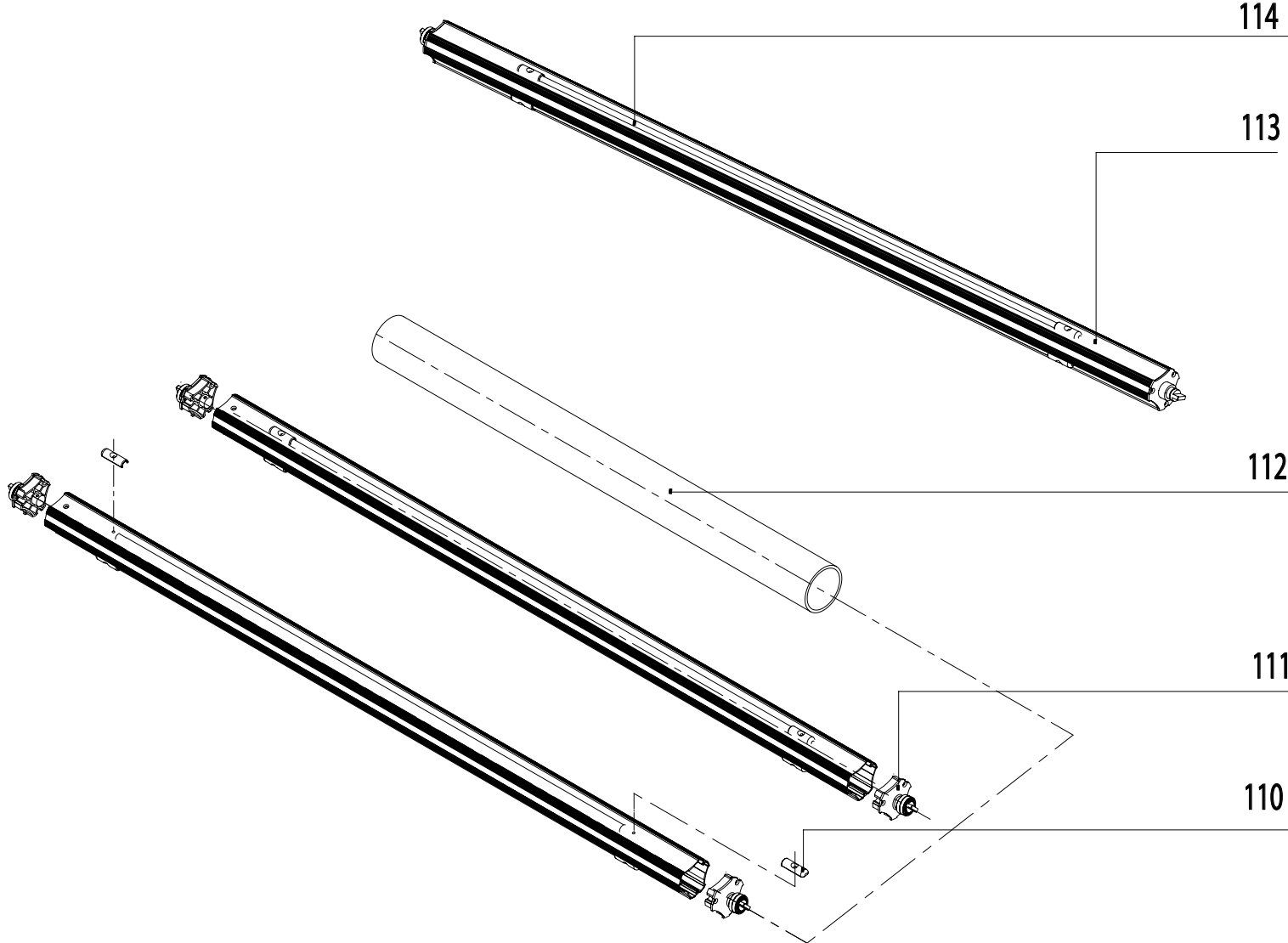
96

95

93A

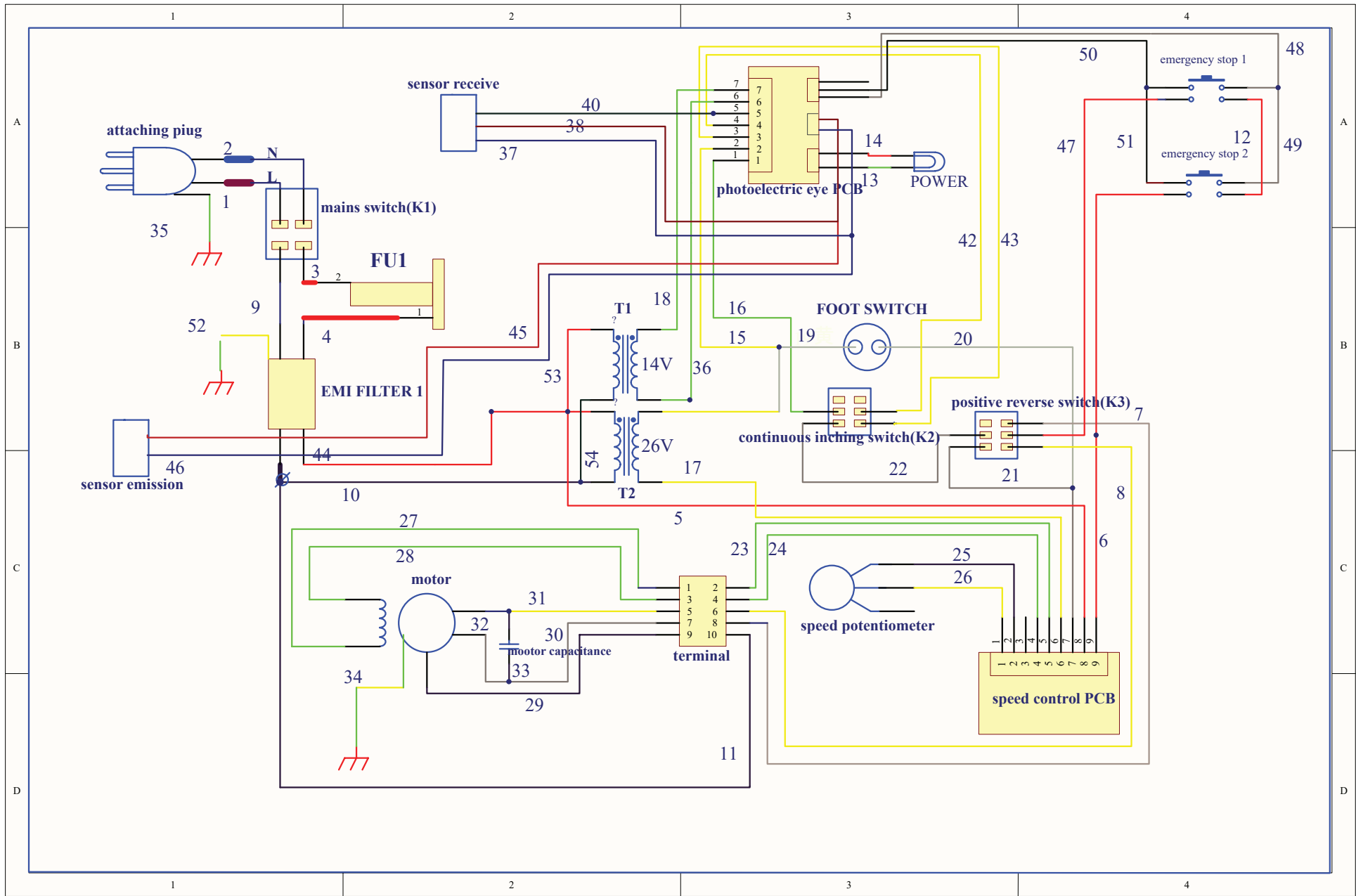












View 8 - 255C-1/263C-1 Wiring